

HOMESTEAD

SERIES

HOUSE PLANS



A new-home
planning guide by

Ritz-Craft
CUSTOM HOMES



HOMESTEAD

S E R I E S

HOUSE PLANS

Our Homestead Series is a collection of traditionally styled, “right-sized” house plans that embrace the solid and practical needs of hard working American families—those who want to build an efficient and value-designed home to meet both their present needs and long term expectations.

Homestead plans are designed to be built economically and within your budget considerations while retaining high standards for energy efficiency or material quality. Your new home will include quality cabinetry, interior trim, windows, exterior doors and siding for low-maintenance, reliable performance and lasting value.

Thank you for considering a Homestead Series home by Ritz-Craft. We look forward to making your new home the next and most important home we build.

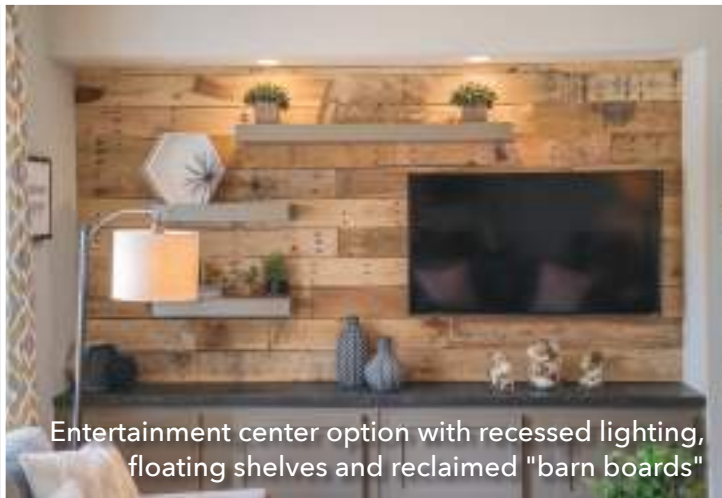




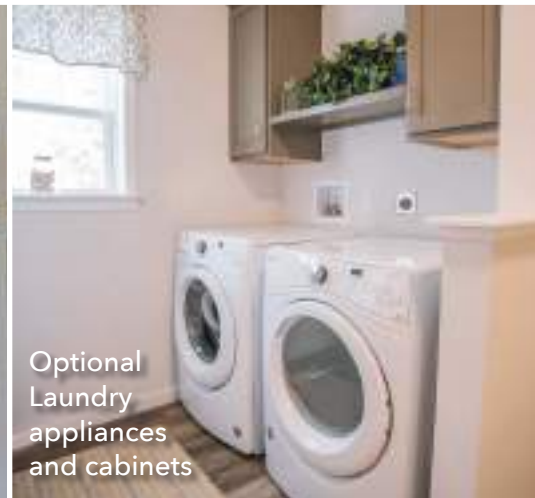
Optional "Easy Living Kitchen"
available in many plans



Optional "Dog Wash"
in utility room



Entertainment center option with recessed lighting,
floating shelves and reclaimed "barn boards"



Optional
Laundry
appliances
and cabinets



Standard Homestead
Master Bath cabinetry and
matching framed mirrors



Bench & Coat Rack
with reclaimed
barn wood



Opt. tiled Master Shower
with transom window



A HOMESTEAD
Neighborhood
Plan

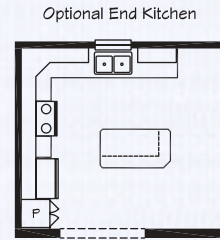
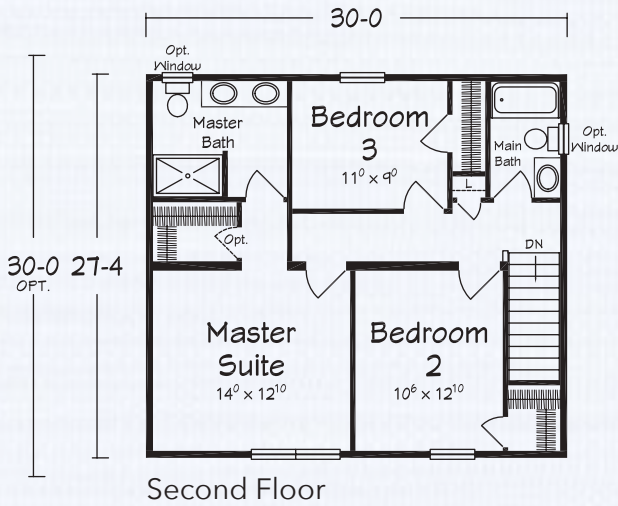
ARGYLE

TWO STORY

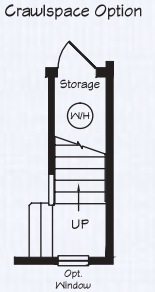
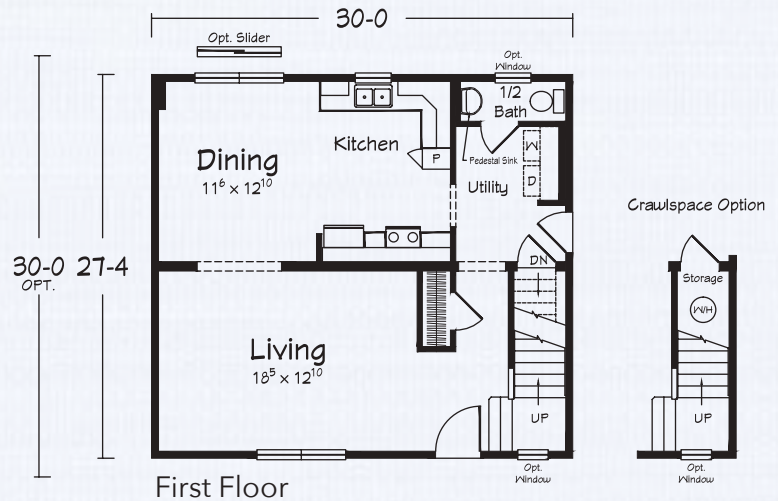
1640-1800 square feet
3 Bedrooms • 2½ Baths



Shown with site built porch and garage



Alternate Elevation





**A HOMESTEAD
Neighborhood
Plan**

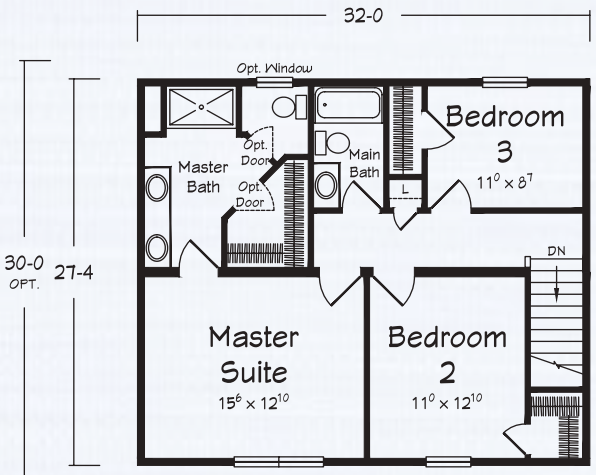
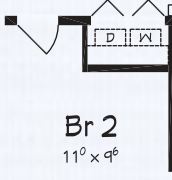
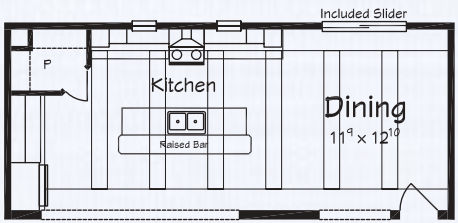


Shown with site built porch and garage

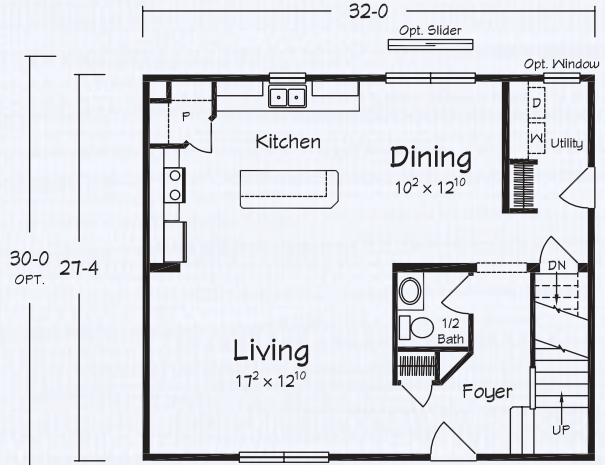
OPTIMA TWO STORY

1750-1920 square feet
3 Bedrooms • 2½ Baths

Easy Living Kitchen Option
w/Laundry moved to 2nd Floor

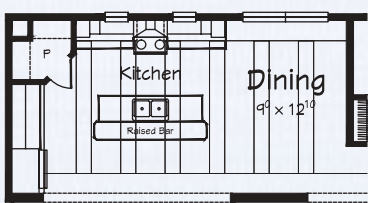


Second Floor

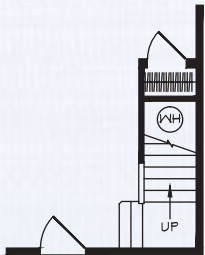


First Floor

Easy Living Kitchen Opt.



Crawlspace Option



Alternate Elevation

Artist's renderings depict homes as they may be built on a typical site. Renderings may include optional or site installed features. Refer to Ritz-Craft's standard "Homestead Specifications" and be sure to thoroughly discuss all aspects of your building project with your selected homebuilder.





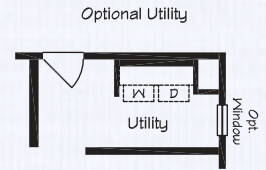
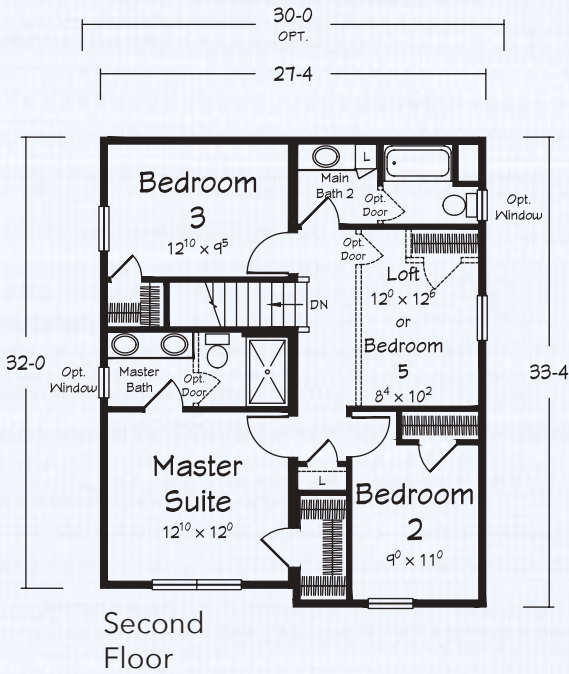
**A HOMESTEAD
Neighborhood
Plan**

ANSON TWO STORY

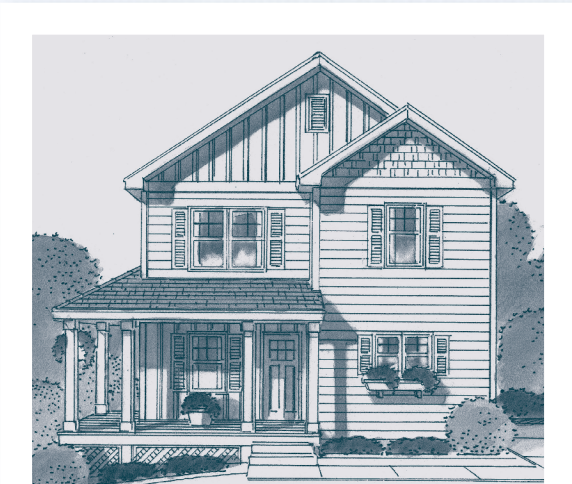
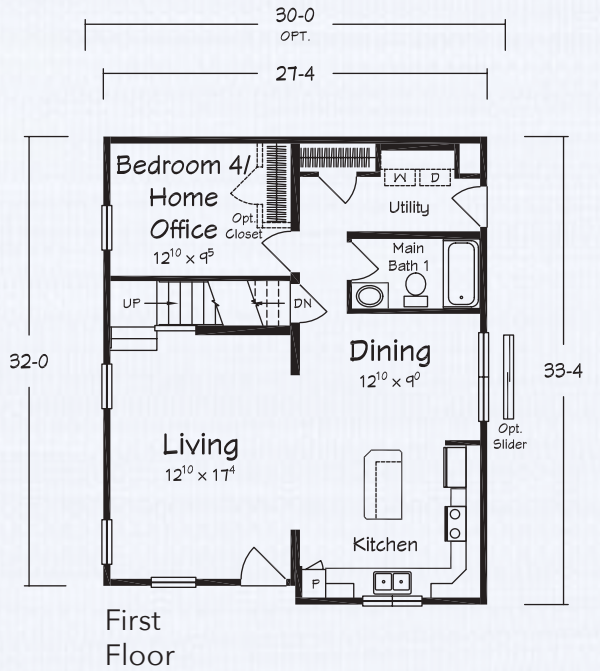
1786-1960 square feet
4-5 Bedrooms • 3 Baths



Shown with site built porch



Crawlspace Option



Alternate Elevation



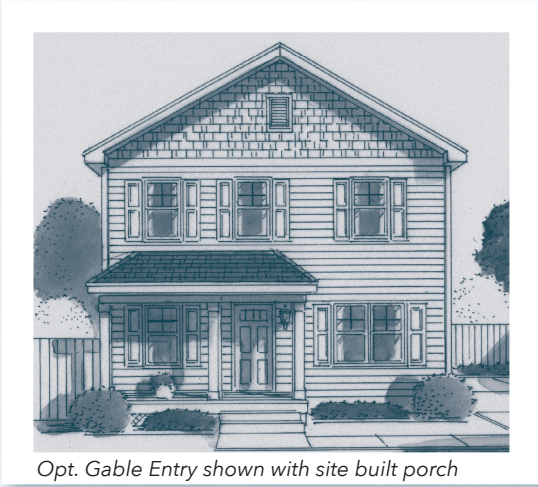
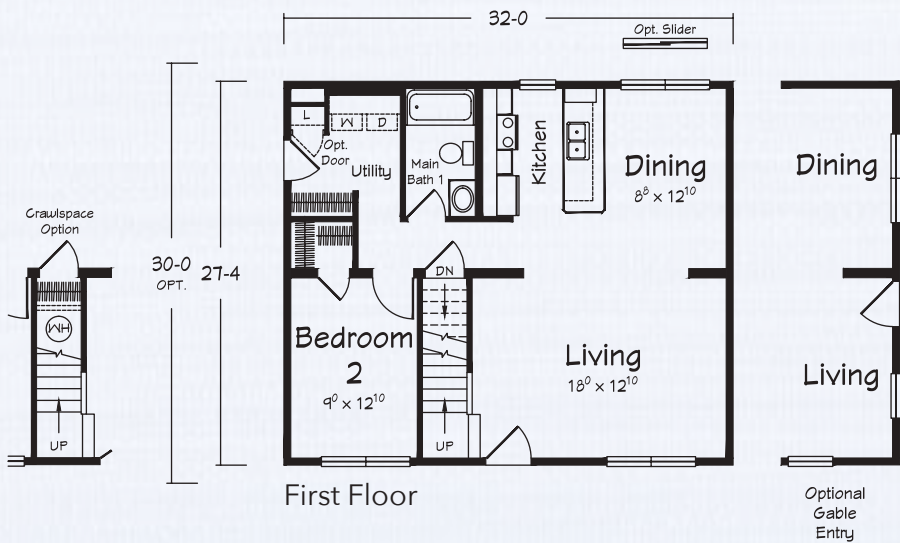
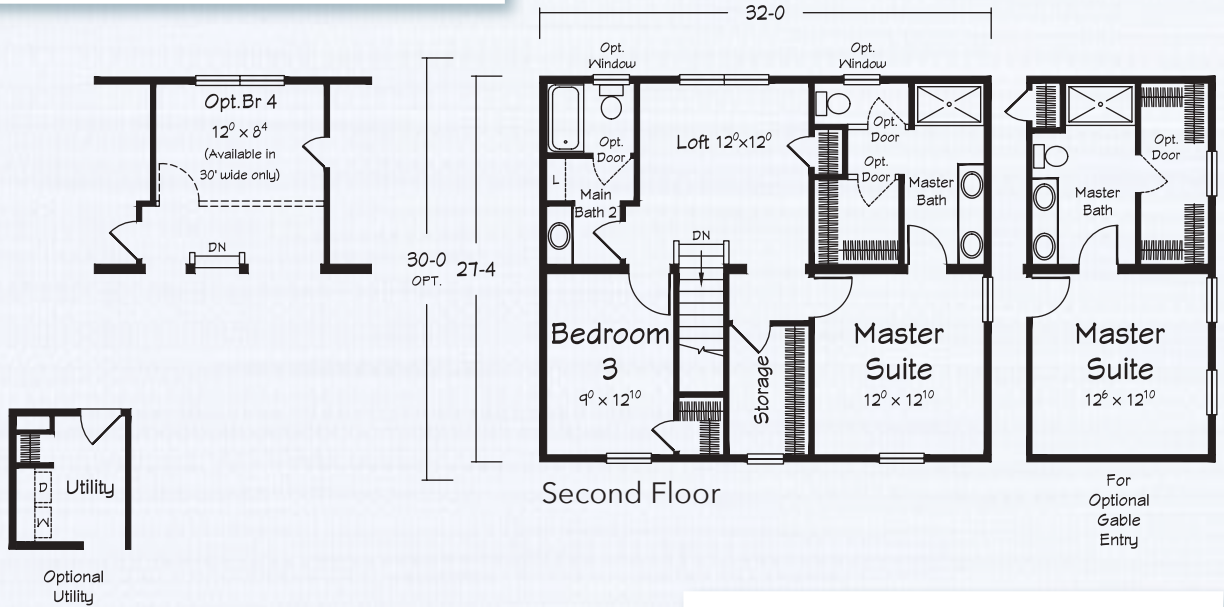
Shown with site built porch

EDGEMOORE

TWO STORY

1750-1920 square feet

3-4 Bedrooms • 3 Baths





A HOMESTEAD
Neighborhood
Plan

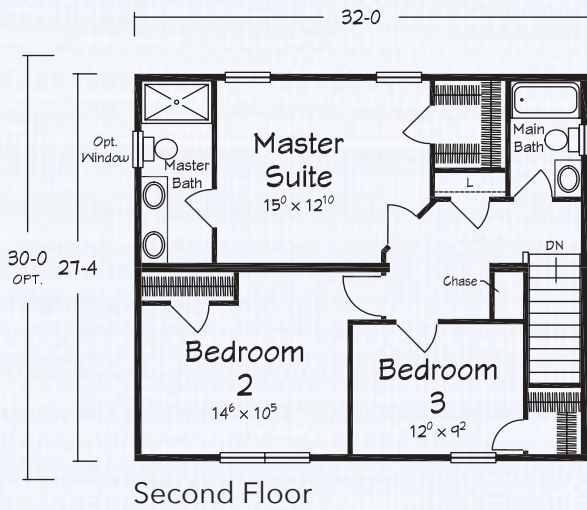
IRON TOWN

TWO STORY

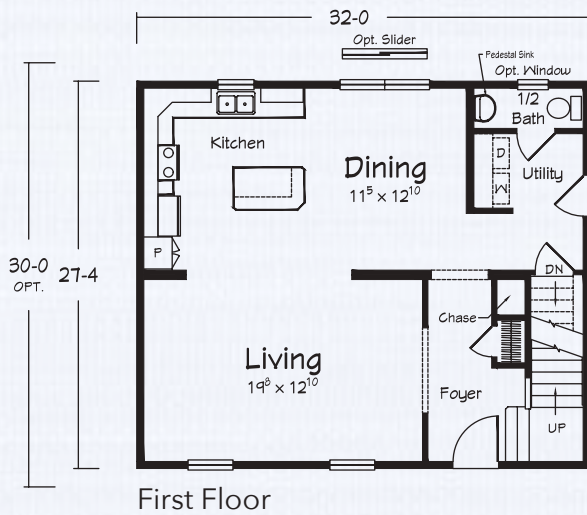
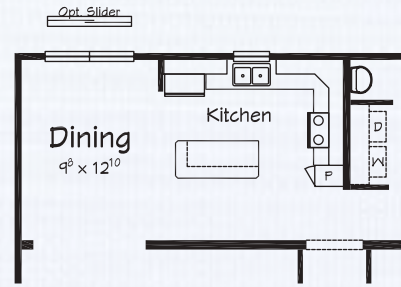
1750-1920 square feet
3 Bedrooms • 2½ Baths



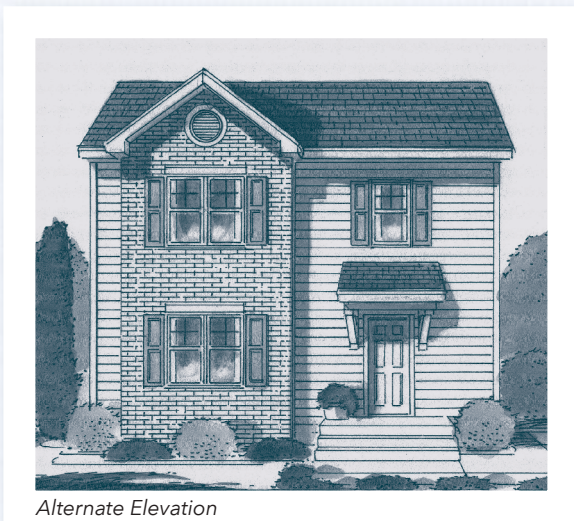
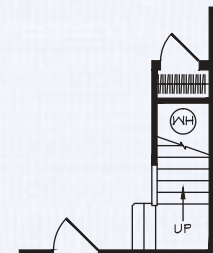
Shown with site built porch and garage



Optional Iron Town Center Kitchen



Crawlspace Option



Alternate Elevation



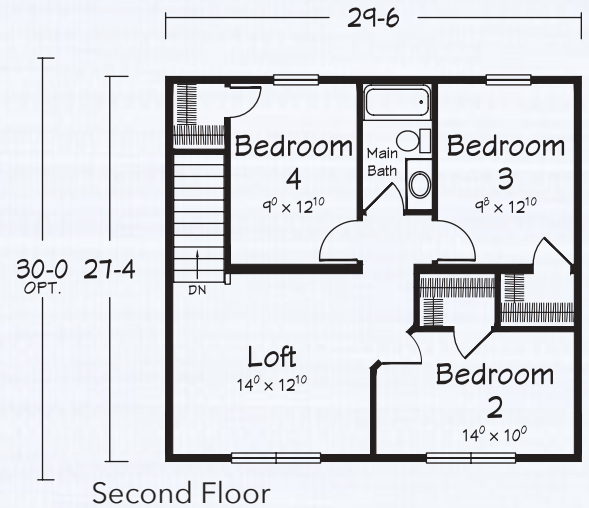
**A HOMESTEAD
Neighborhood
Plan**



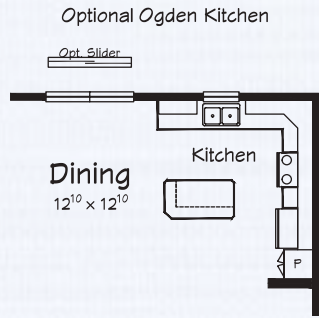
Shown with site built porch

OGDEN TWO STORY

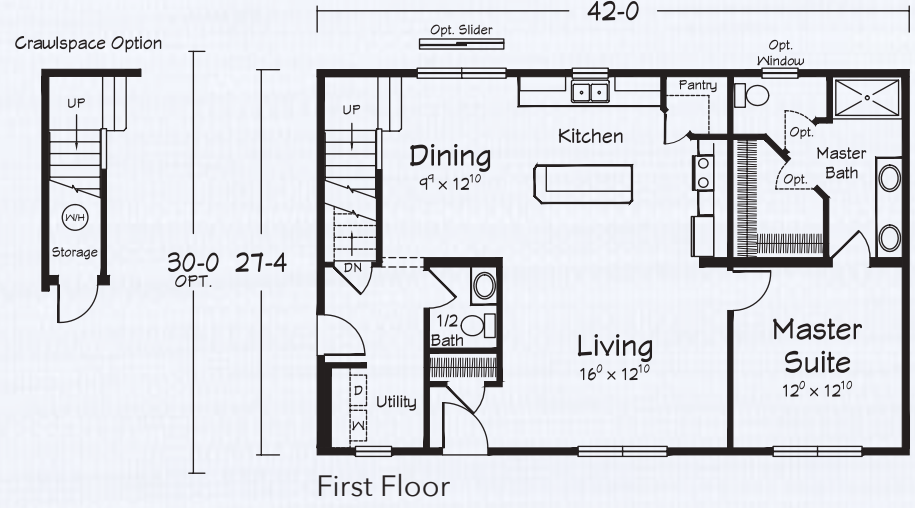
1954-2145 square feet
4 Bedrooms • 2½ Baths



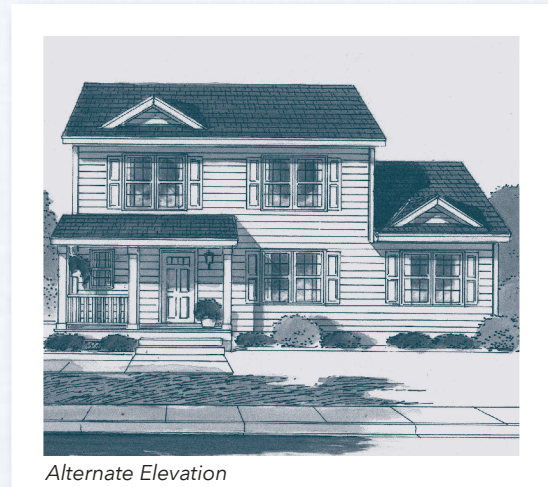
Second Floor



Optional Ogden Kitchen



First Floor



Alternate Elevation

Artist's renderings depict homes as they may be built on a typical site. Renderings may include optional or site installed features. Refer to Ritz-Craft's standard "Homestead Specifications" and be sure to thoroughly discuss all aspects of your building project with your selected homebuilder.





A HOMESTEAD
Neighborhood
Plan

ENTRADA

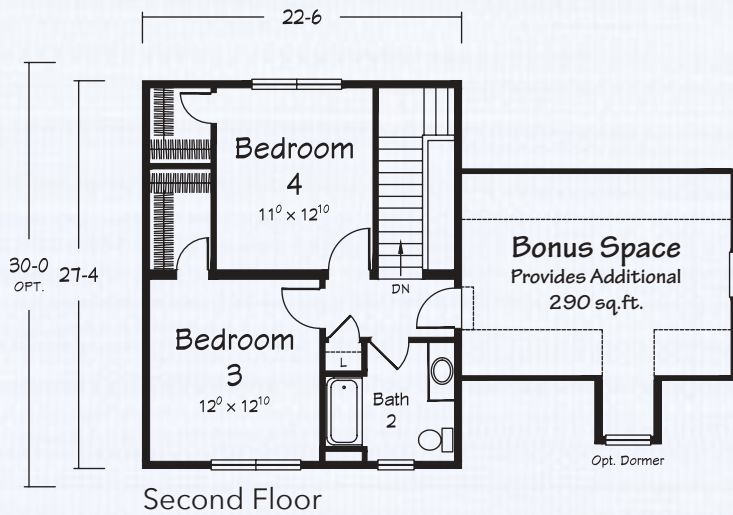
TWO STORY

1754-1922 square feet

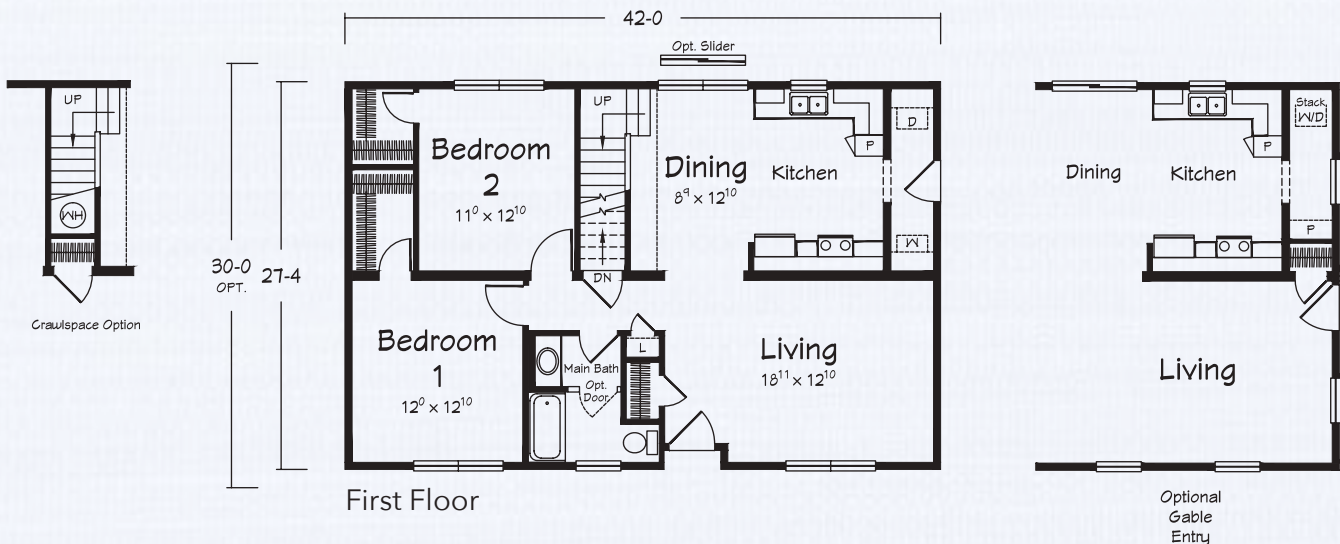
4 Bedrooms • 2 Baths



Shown with site built porch



Opt. Gable Entry shown with site built porch





**A HOMESTEAD
Neighborhood
Plan**



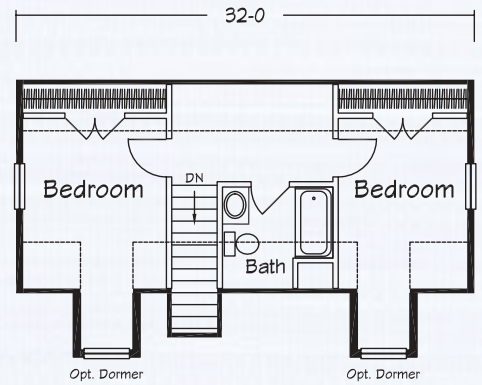
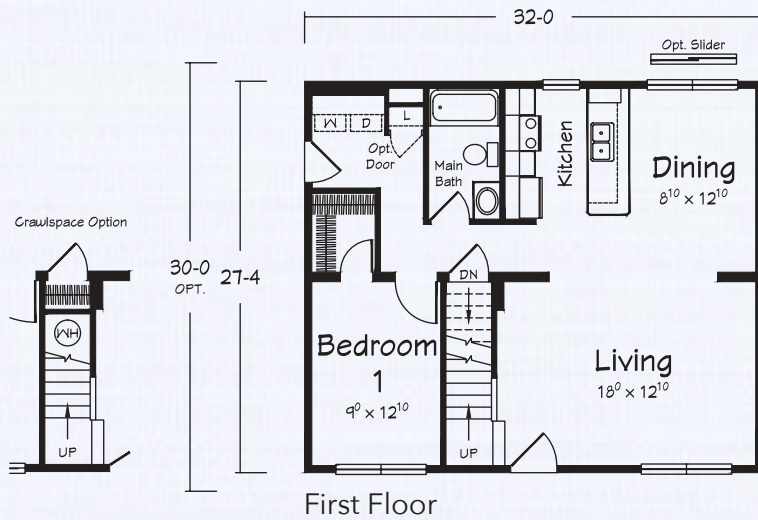
Shown with site built porch

EDGEMOORE

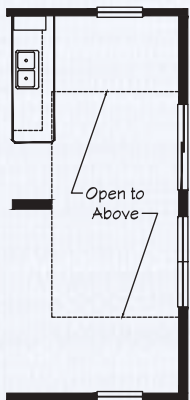
CAPE COD

1330-1416 square feet available

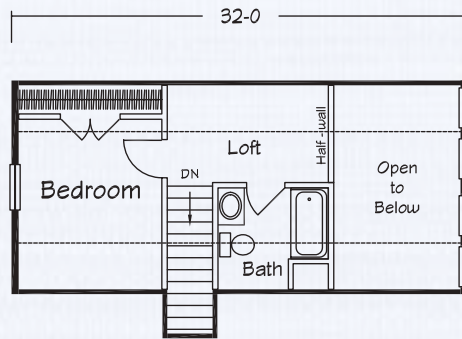
1-3 Bedrooms • 1-2 Baths



*Proposed Upper Level
456 sq. ft.



Edgemore "Chalet"
Gable End



Edgemore Chalet
*Proposed Upper Level
315 sq. ft.



Edgemore Chalet Elevation
shown with site built deck

* Please note that the upper-level area is designed for economical completion on-site. Refer to Ritz-Craft's print package and specifications for included materials and discuss all aspects of completion with your selected homebuilder.

Artist's renderings depict homes as they may be built on a typical site. Renderings may include optional or site installed features. Refer to Ritz-Craft's standard "Homestead Specifications" and be sure to thoroughly discuss all aspects of your building project with your selected homebuilder.





A HOMESTEAD
Neighborhood
Plan

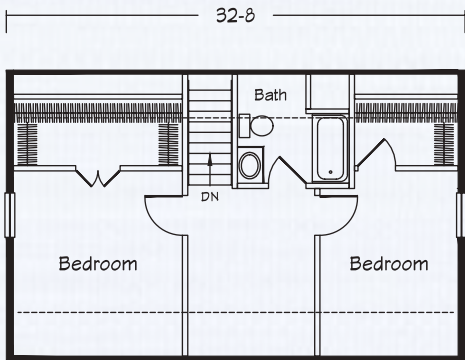
ALBION

CAPE COD

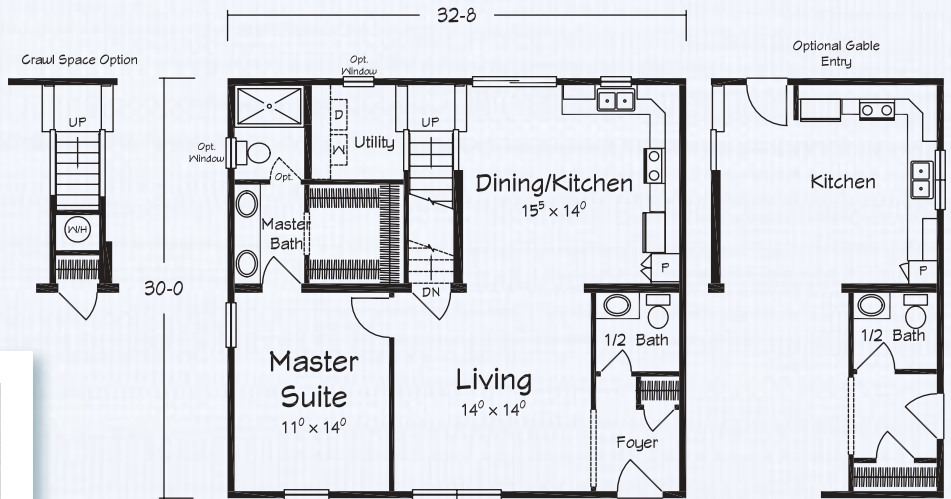
1446 square feet available
1-3 Bedrooms • 1½-2½ Baths



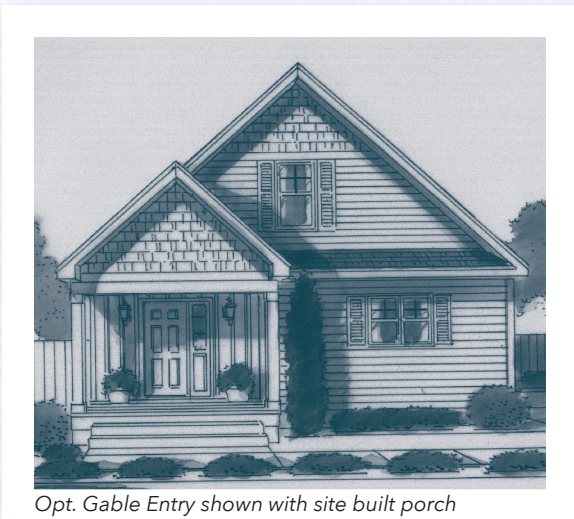
Shown with site built porch and garage



*Proposed Upper Level
460 sq. ft.



First Floor



Opt. Gable Entry shown with site built porch

* Please note that the upper-level area is designed for economical completion on-site. Refer to Ritz-Craft's print package and specifications for included materials and discuss all aspects of completion with your selected homebuilder.



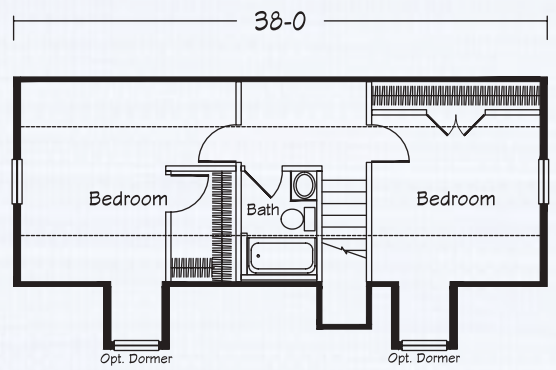
**A HOMESTEAD
Neighborhood
Plan**



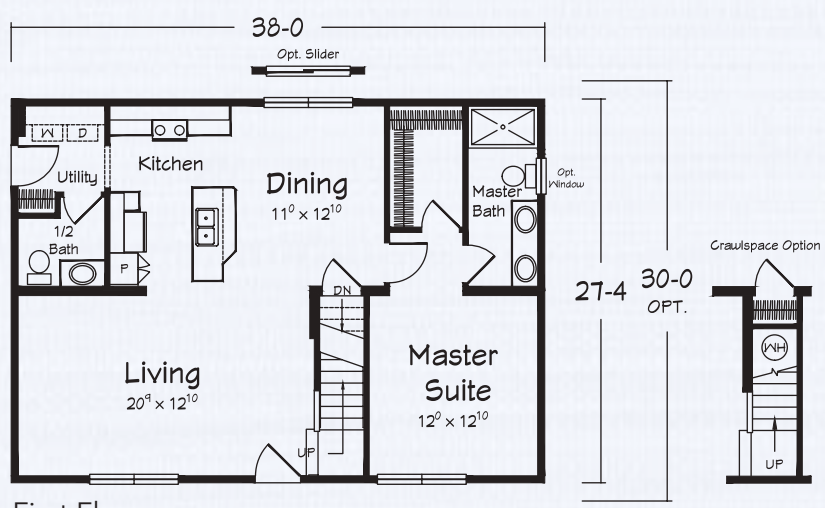
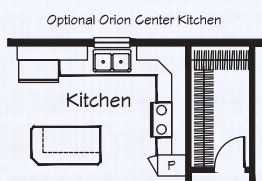
Shown with site built porch and garage

ORION CAPE COD

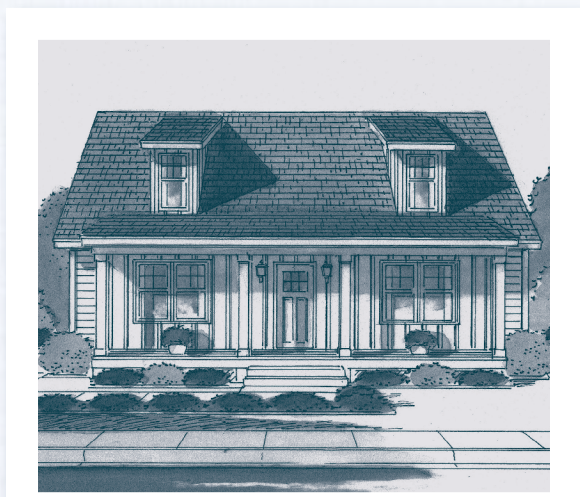
1575-1676 square feet available
1-3 Bedrooms • 1½-2½ Baths



*Proposed Upper Level
536 sq. ft.



First Floor



Alternate Elevation

* Please note that the upper-level area is designed for economical completion on-site. Refer to Ritz-Craft's print package and specifications for included materials and discuss all aspects of completion with your selected homebuilder.

Artist's renderings depict homes as they may be built on a typical site. Renderings may include optional or site installed features. Refer to Ritz-Craft's standard "Homestead Specifications" and be sure to thoroughly discuss all aspects of your building project with your selected homebuilder.





A HOMESTEAD
Neighborhood
Plan

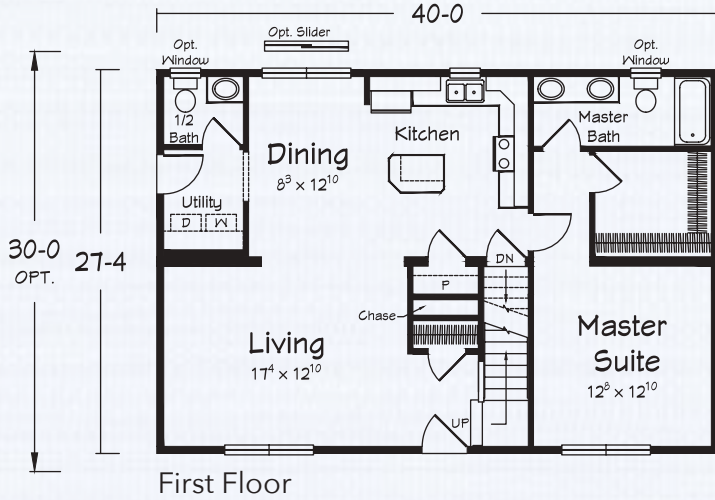
ANNANDALE

CAPE COD

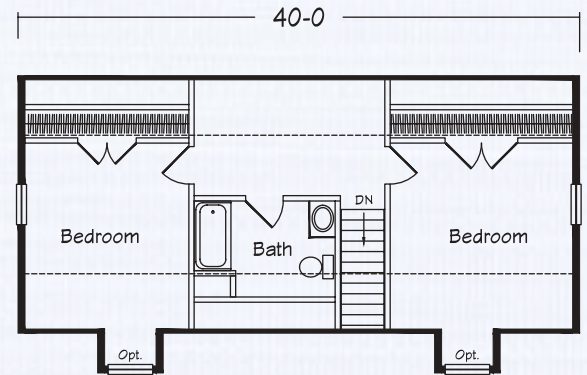
1657-1764 square feet available
1-3 Bedrooms • 1½-2½ Baths



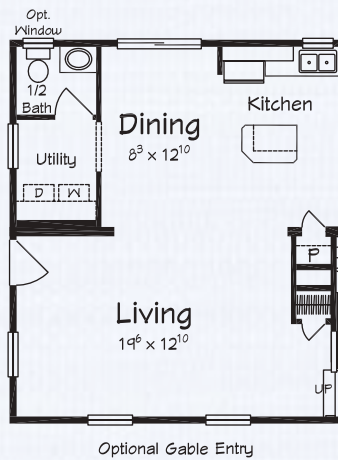
Shown with site built porch and optional split windows



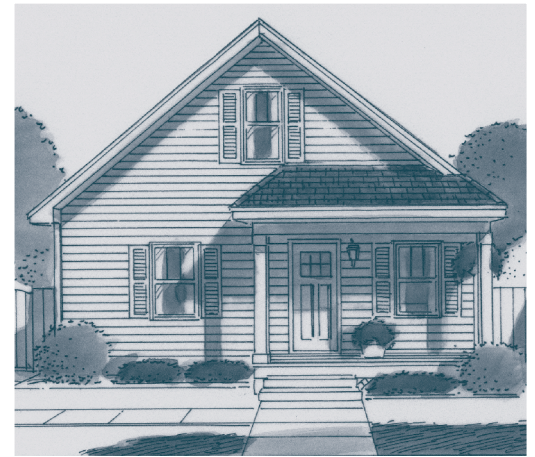
First Floor



*Proposed Upper Level
564 sq. ft.



Optional Gable Entry



Opt. Gable Entry shown with site built porch

* Please note that the upper-level area is designed for economical completion on-site. Refer to Ritz-Craft's print package and specifications for included materials and discuss all aspects of completion with your selected homebuilder.



**A HOMESTEAD
Neighborhood
Plan**



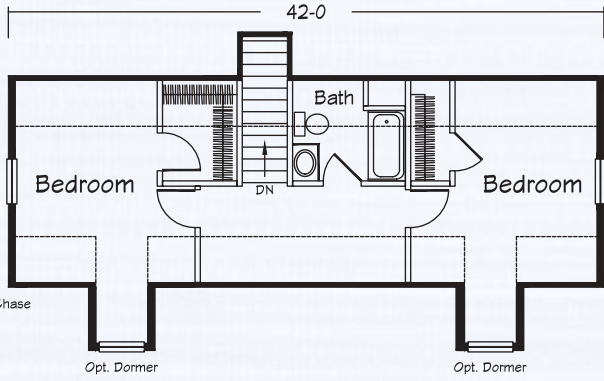
Shown with site built porch

ENTRADA

CAPE COD

1740-1852 square feet available

2-4 Bedrooms • 1-2 Baths



*Proposed Upper Level
592 sq. ft.



Opt. Gable Entry shown with site built porch

* Please note that the upper-level area is designed for economical completion on-site. Refer to Ritz-Craft's print package and specifications for included materials and discuss all aspects of completion with your selected homebuilder.

Artist's renderings depict homes as they may be built on a typical site. Renderings may include optional or site installed features. Refer to Ritz-Craft's standard "Homestead Specifications" and be sure to thoroughly discuss all aspects of your building project with your selected homebuilder.





A HOMESTEAD
Neighborhood
Plan

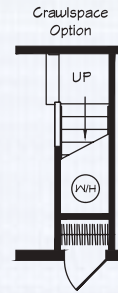
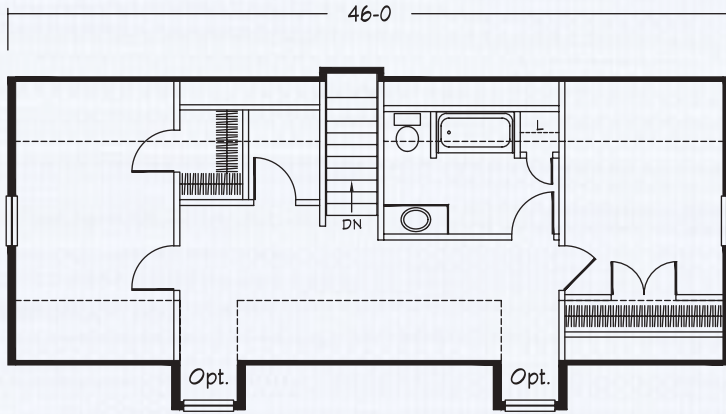
OAK GROVE

CAPE COD

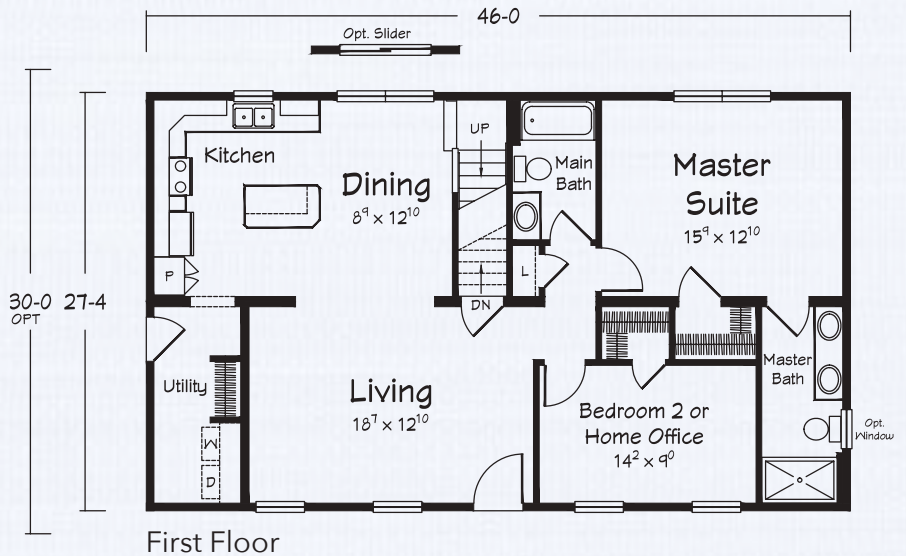
1906-2028 square feet available
2-4 Bedrooms • 2-3 Baths



Shown with site built porch



*Proposed Upper Level
648 sq. ft.



First Floor

* Please note that the upper-level area is designed for economical completion on-site. Refer to Ritz-Craft's print package and specifications for included materials and discuss all aspects of completion with your selected homebuilder.



**A HOMESTEAD
Neighborhood
Plan**

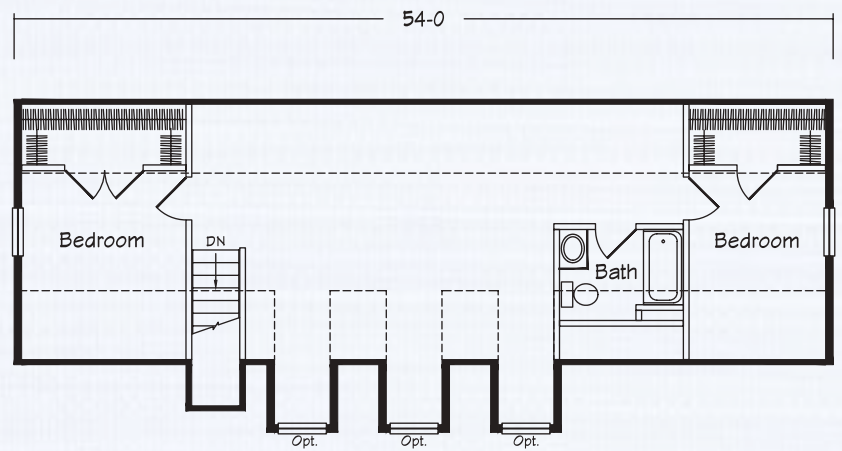


Shown with site built porch

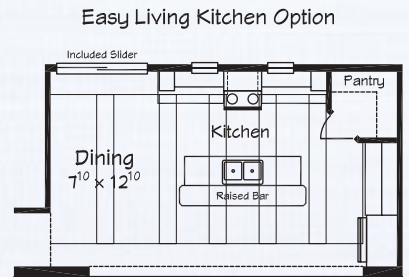
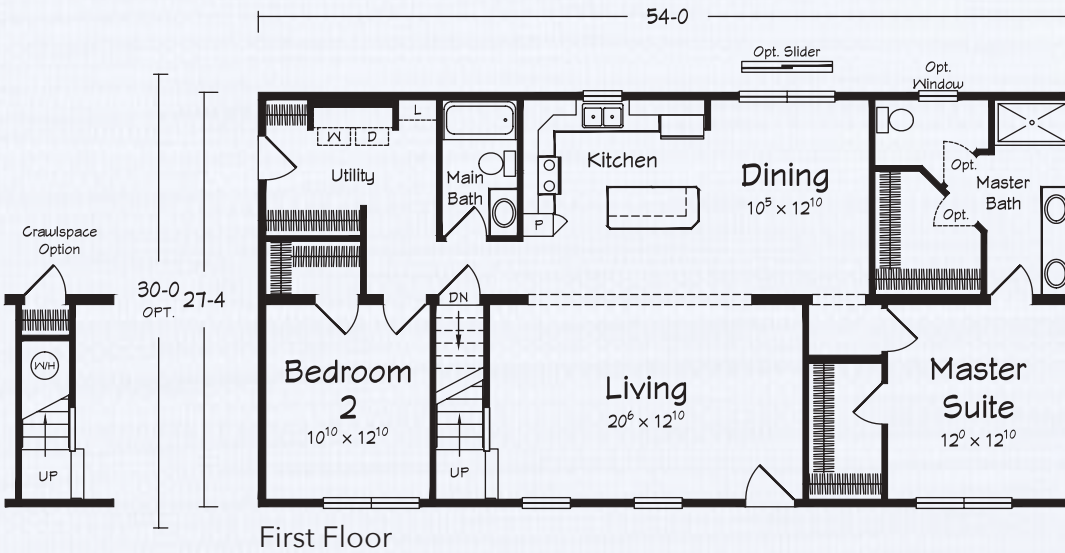
AUDUBON CAPE COD

2236-2382 square feet available

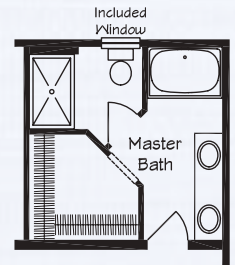
2-4 Bedrooms • 2-3 Baths



*Proposed Upper Level
762 sq. ft.



Moves MBR entry to LR



Opt. HSB-1

* Please note that the upper-level area is designed for economical completion on-site. Refer to Ritz-Craft's print package and specifications for included materials and discuss all aspects of completion with your selected homebuilder.

Artist's renderings depict homes as they may be built on a typical site. Renderings may include optional or site installed features. Refer to Ritz-Craft's standard "Homestead Specifications" and be sure to thoroughly discuss all aspects of your building project with your selected homebuilder.





A HOMESTEAD
Front Garage
Plan

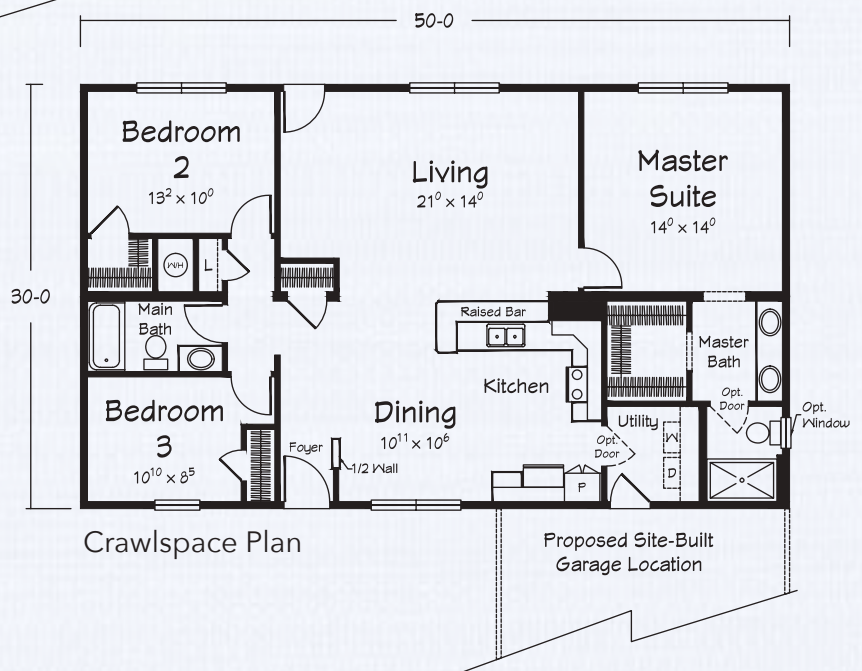
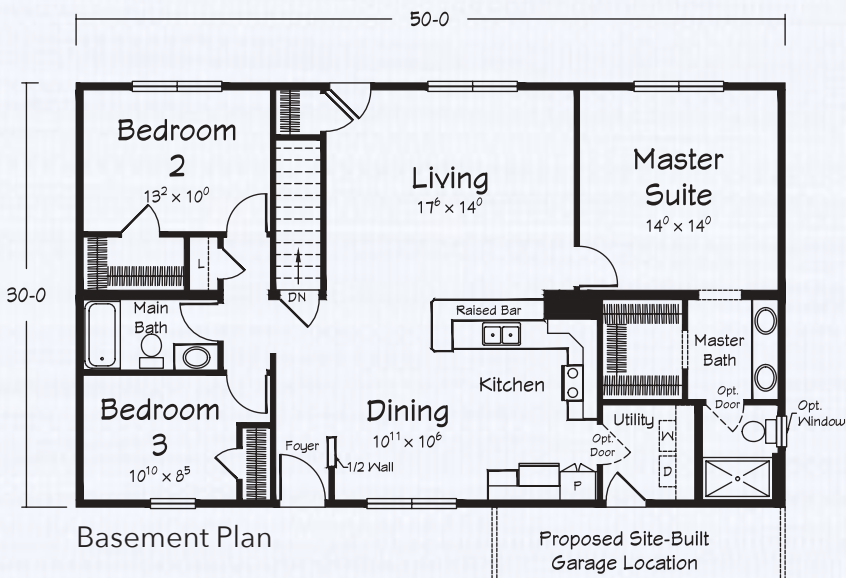


Shown with site built porch and garage

ARDMORE

RANCH

1500 square feet
3 Bedrooms • 2 Baths





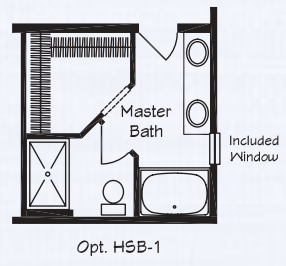
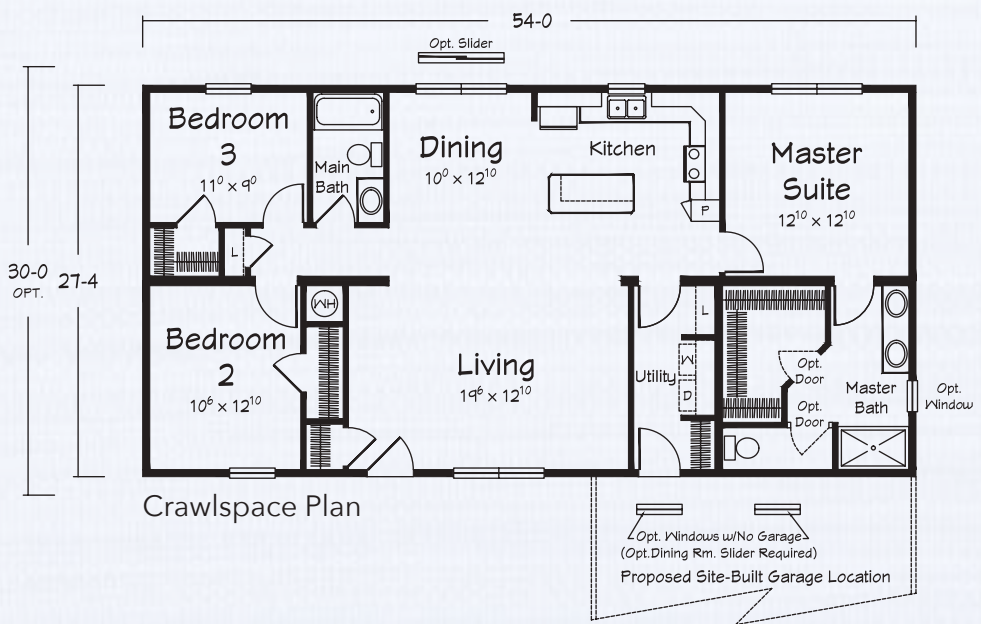
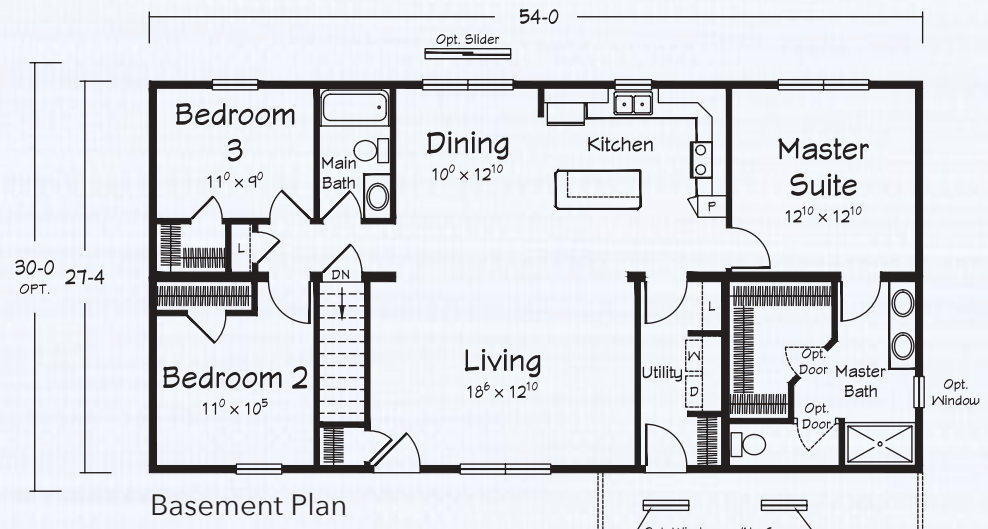
**A HOMESTEAD
Front Garage
Plan**



Shown with site built porch and garage

**EDENTON
RANCH**

1476-1620 square feet
3 Bedrooms • 2 Baths



Artist's renderings depict homes as they may be built on a typical site. Renderings may include optional or site installed features. Refer to Ritz-Craft's standard "Homestead Specifications" and be sure to thoroughly discuss all aspects of your building project with your selected homebuilder.





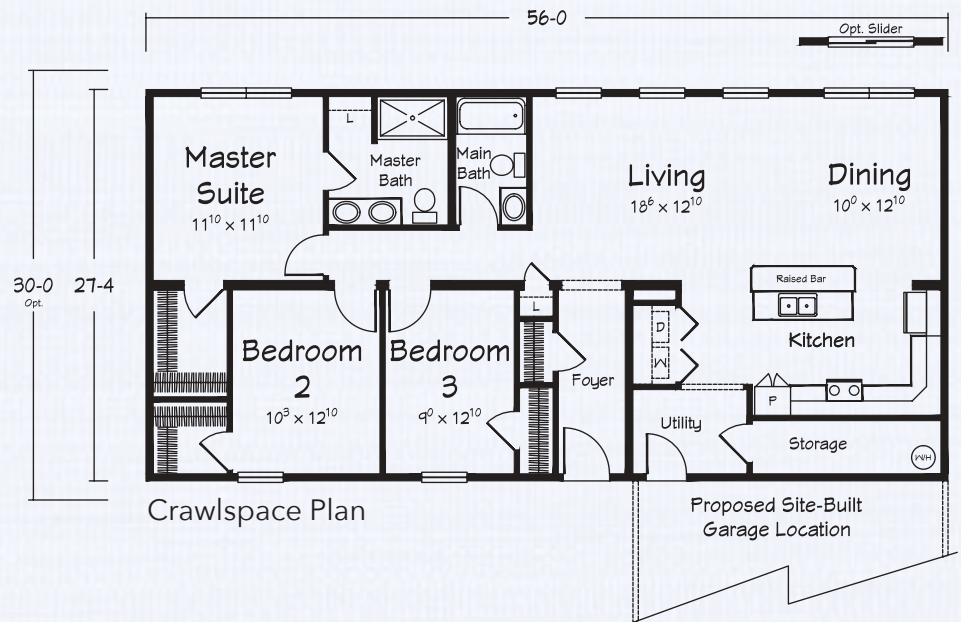
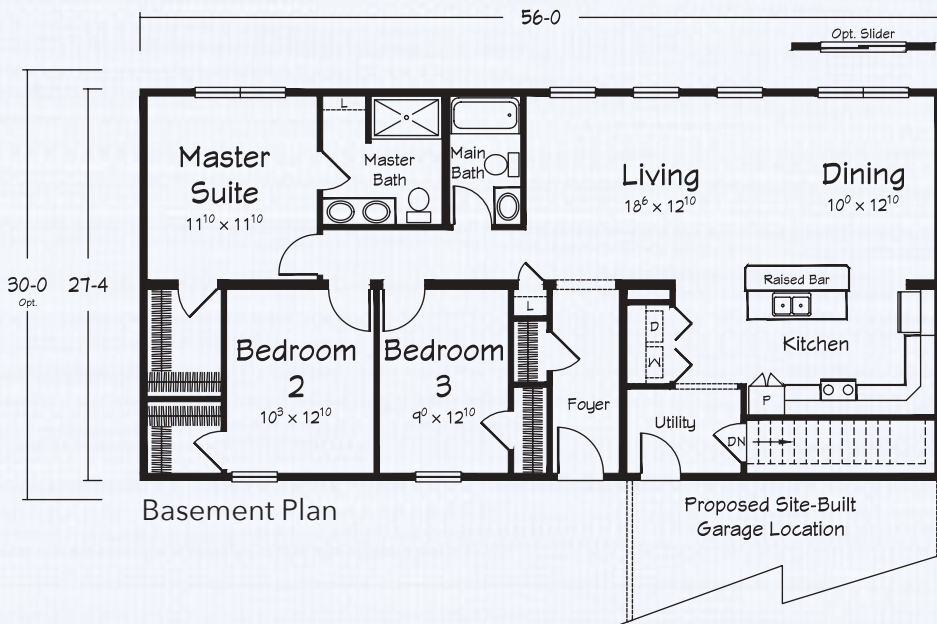
**A HOMESTEAD
Front Garage
Plan**



Shown with site built porch and garage

ASHLAND RANCH

1530-1680 square feet
3 Bedrooms • 2 Baths





**A HOMESTEAD
Front Garage
Plan**

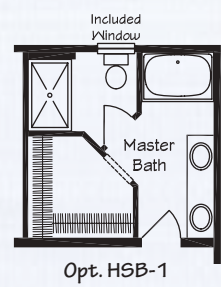
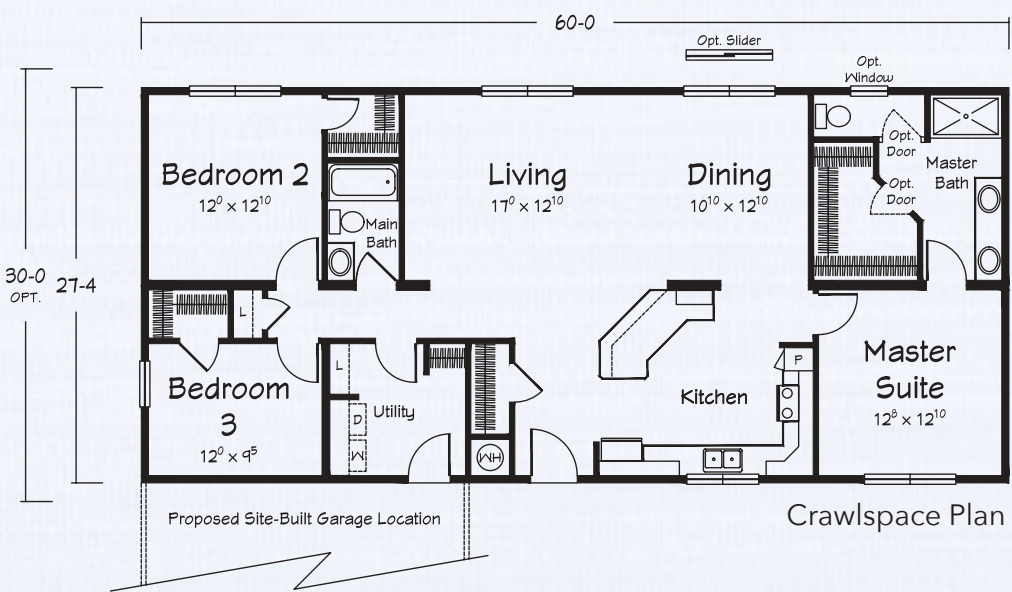
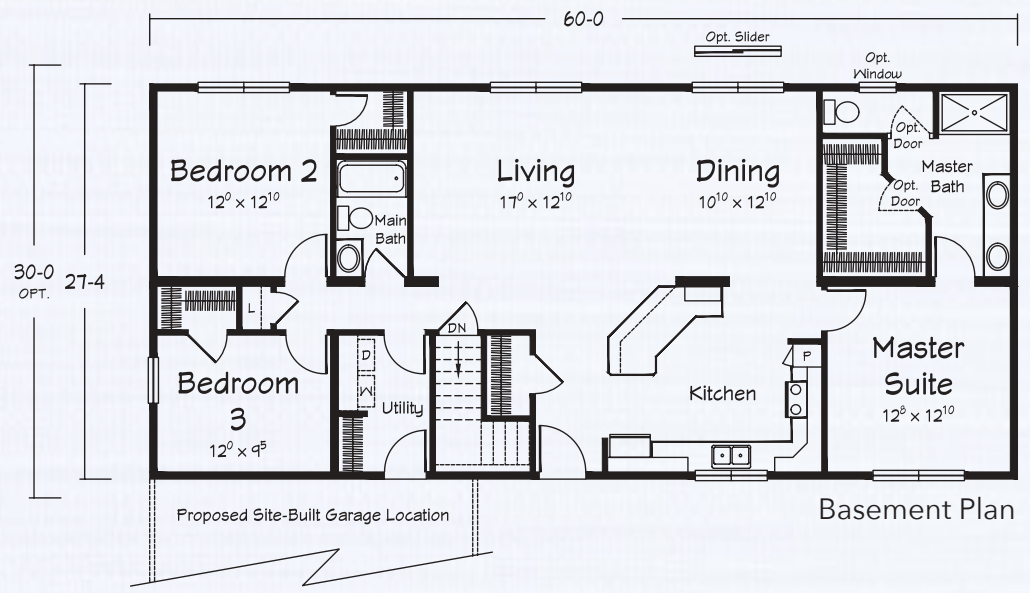


Shown with site built porch and garage

EVANSVILLE RANCH

1640-1800 square feet

3 Bedrooms • 2 Baths



Artist's renderings depict homes as they may be built on a typical site. Renderings may include optional or site installed features. Refer to Ritz-Craft's standard "Homestead Specifications" and be sure to thoroughly discuss all aspects of your building project with your selected homebuilder.





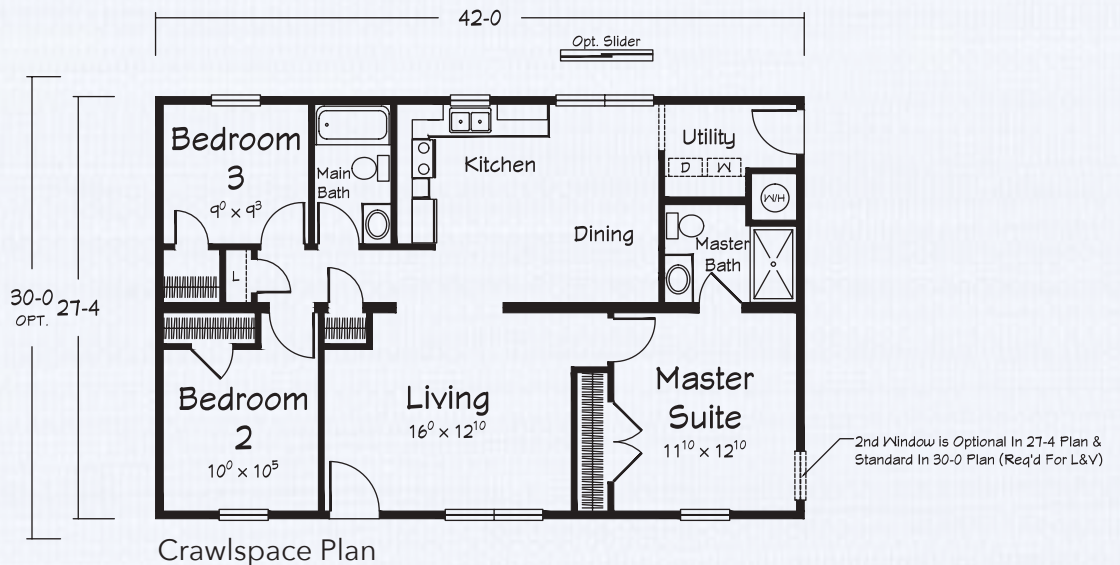
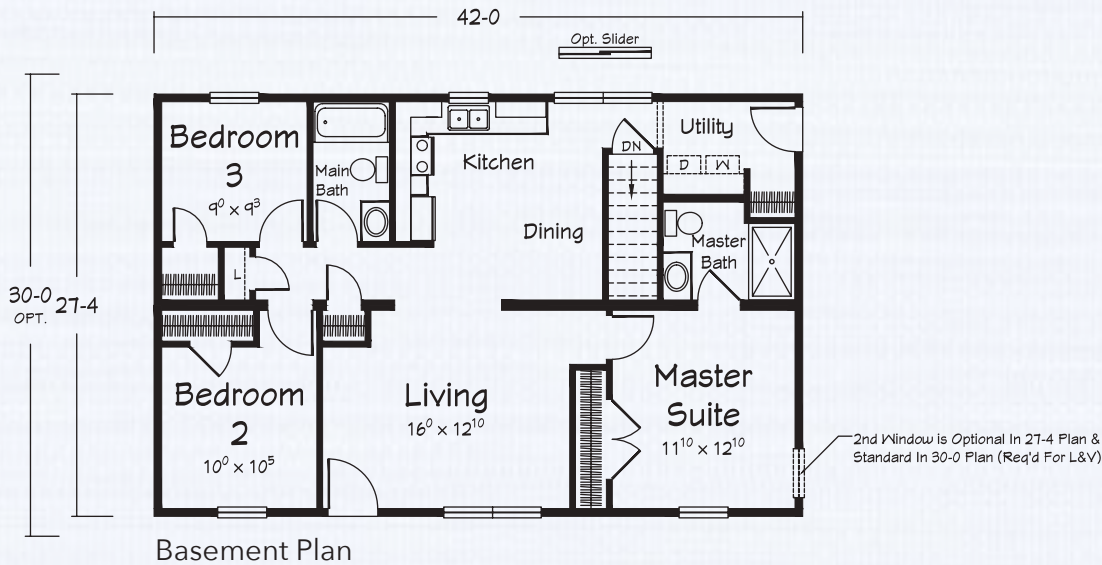
**A HOMESTEAD
Ranch
Plan**

AVON RANCH

1148-1260 square feet
3 Bedrooms • 2 Baths



Shown with site built porch





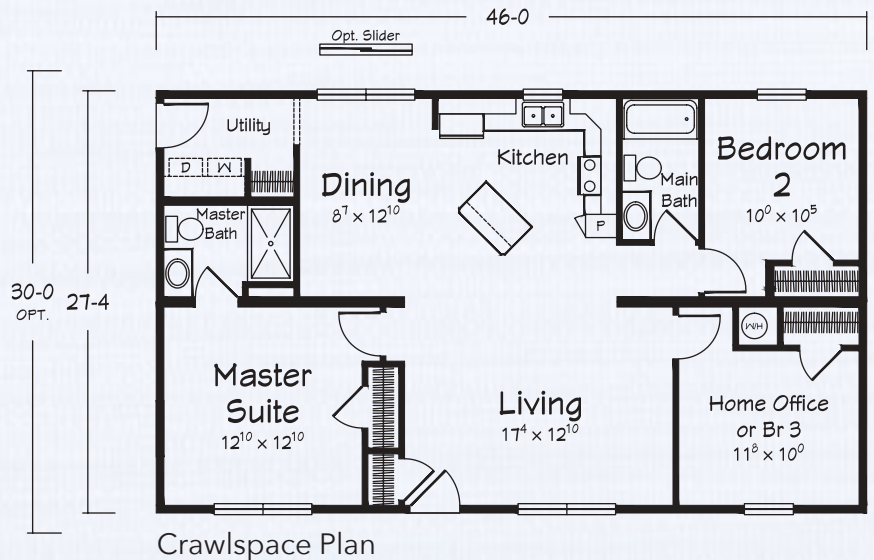
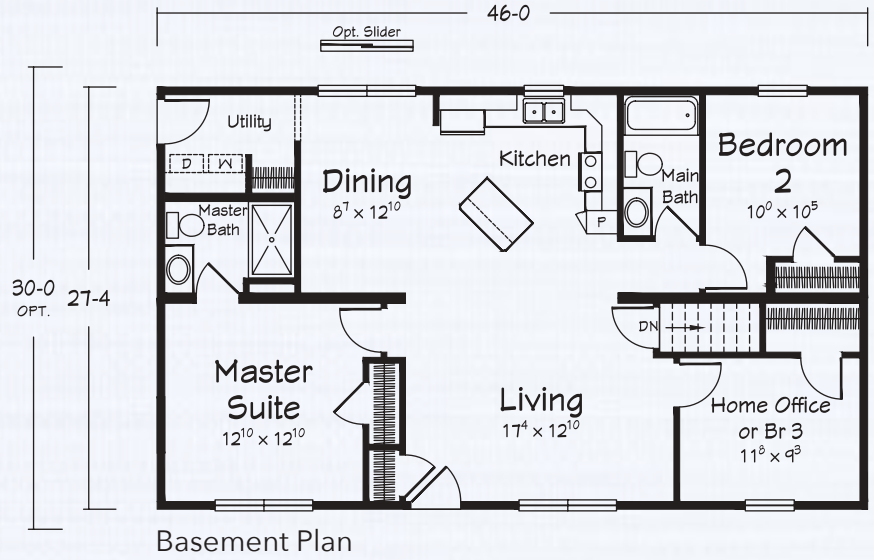
**A HOMESTEAD
Ranch
Plan**



Shown with site built porch

**ATWATER
RANCH**

1258-1380 square feet
3 Bedrooms • 2 Baths



Artist's renderings depict homes as they may be built on a typical site. Renderings may include optional or site installed features. Refer to Ritz-Craft's standard "Homestead Specifications" and be sure to thoroughly discuss all aspects of your building project with your selected homebuilder.





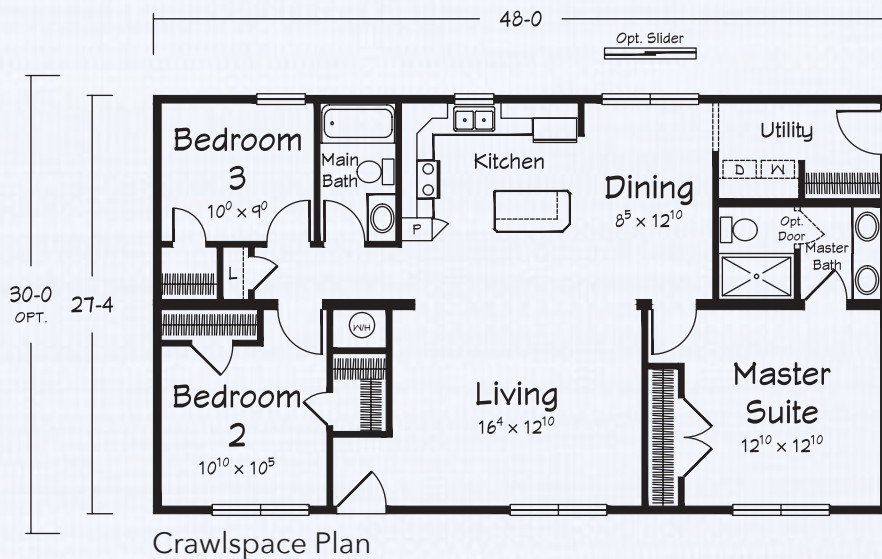
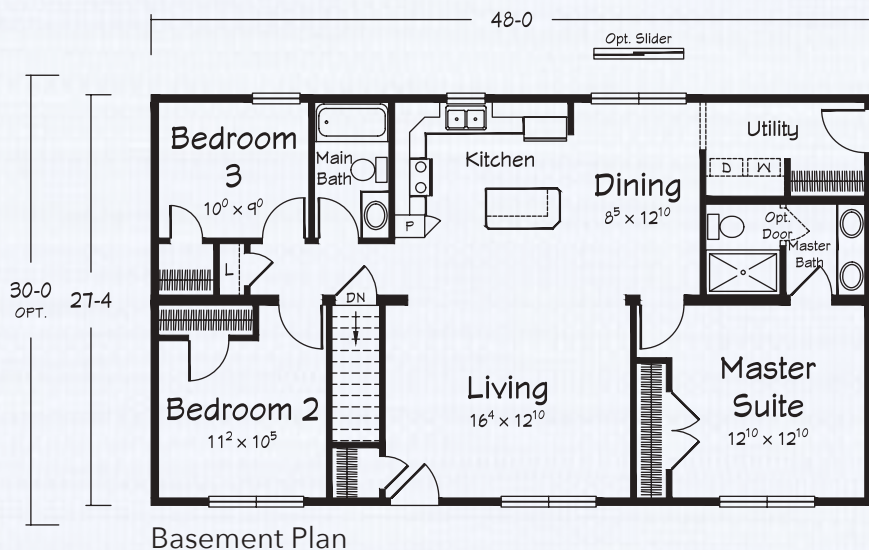
**A HOMESTEAD
Ranch
Plan**

**AZALEA
RANCH**

1312-1440 square feet
3 Bedrooms • 2 Baths



Shown with site built porch





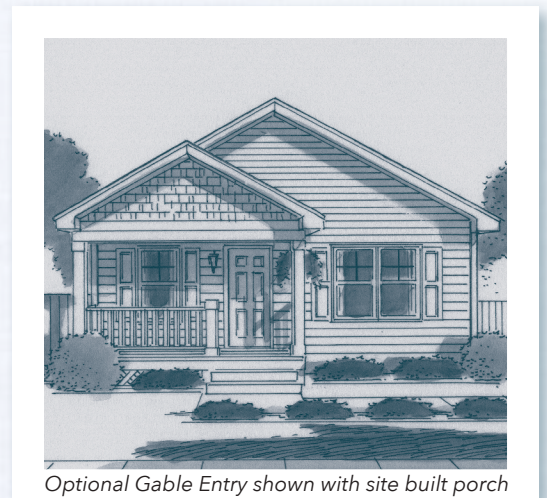
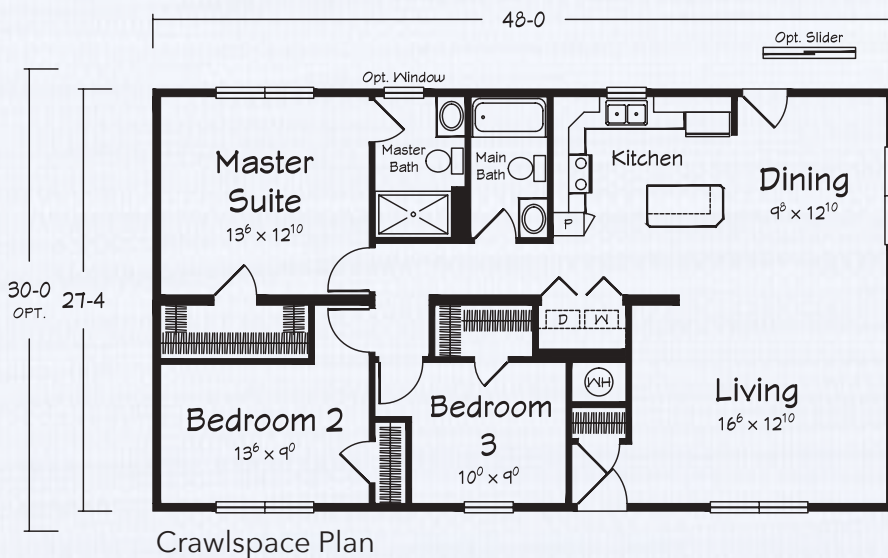
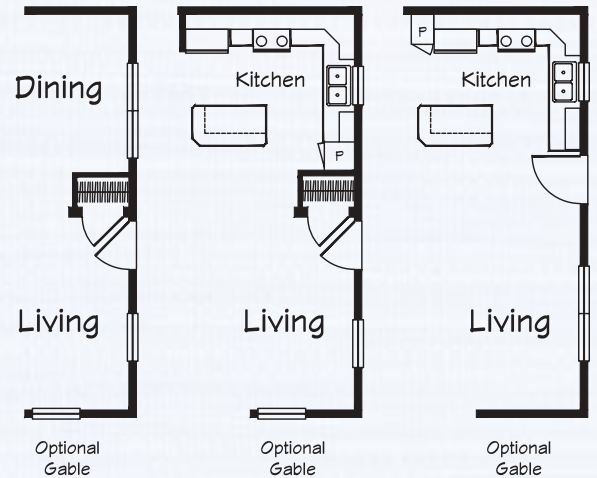
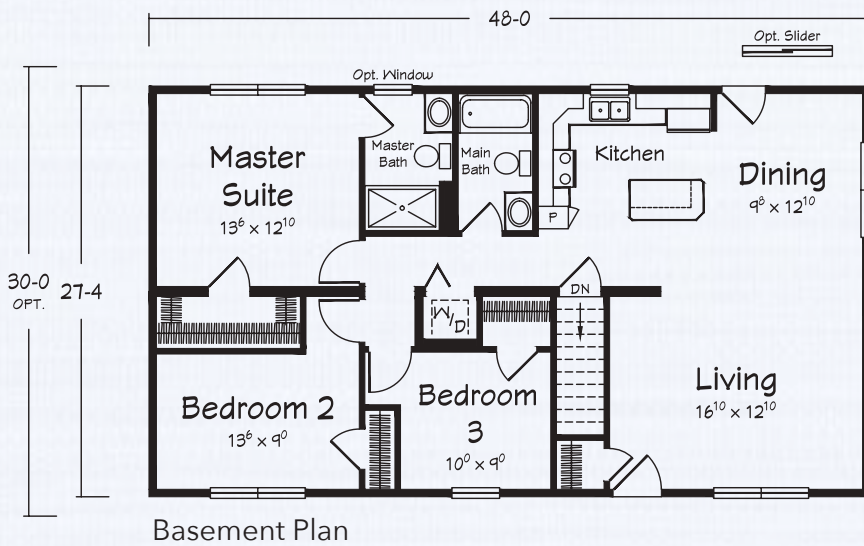
**A HOMESTEAD
Ranch
Plan**



Shown with site built porch

**EVERGREEN
RANCH**

1312-1440 square feet
3 Bedrooms • 2 Baths



Optional Gable Entry shown with site built porch

Artist's renderings depict homes as they may be built on a typical site. Renderings may include optional or site installed features. Refer to Ritz-Craft's standard "Homestead Specifications" and be sure to thoroughly discuss all aspects of your building project with your selected homebuilder.





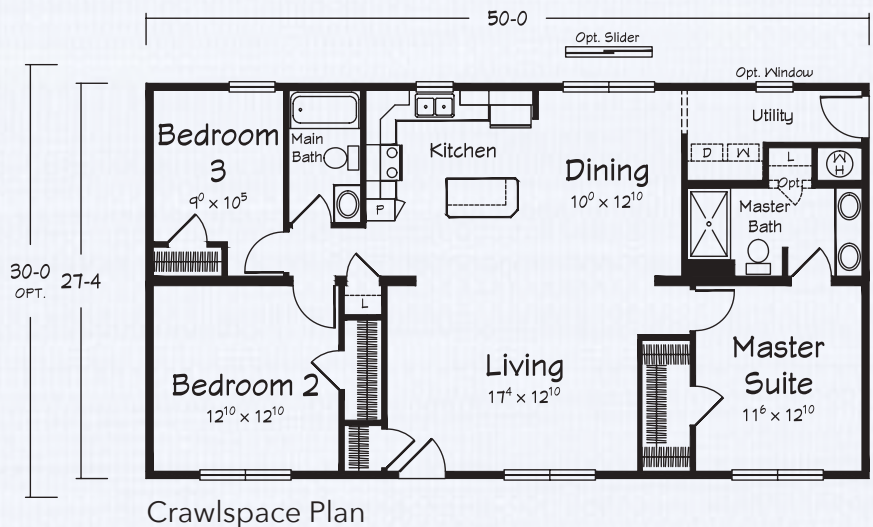
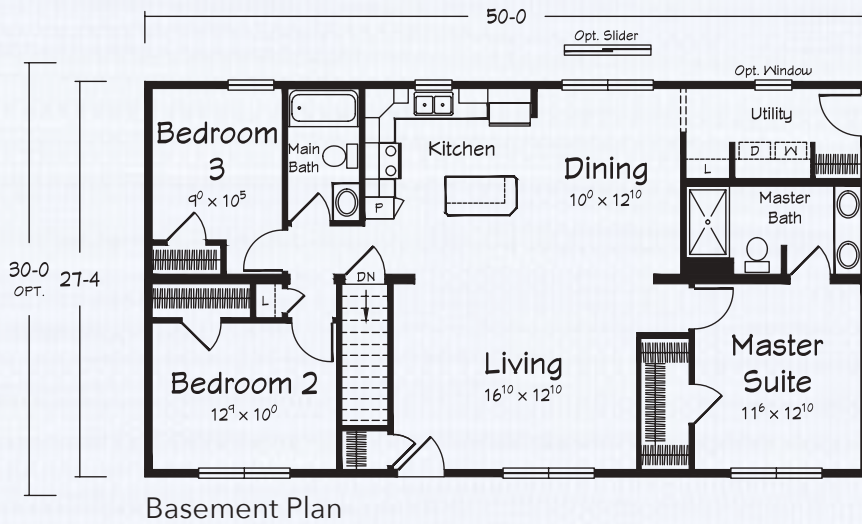
**A HOMESTEAD
Ranch
Plan**

EMORYVILLE RANCH

1366-1500 square feet
3 Bedrooms • 2 Baths



Shown with site built porch





A HOMESTEAD
Ranch
Plan

ECKLEY

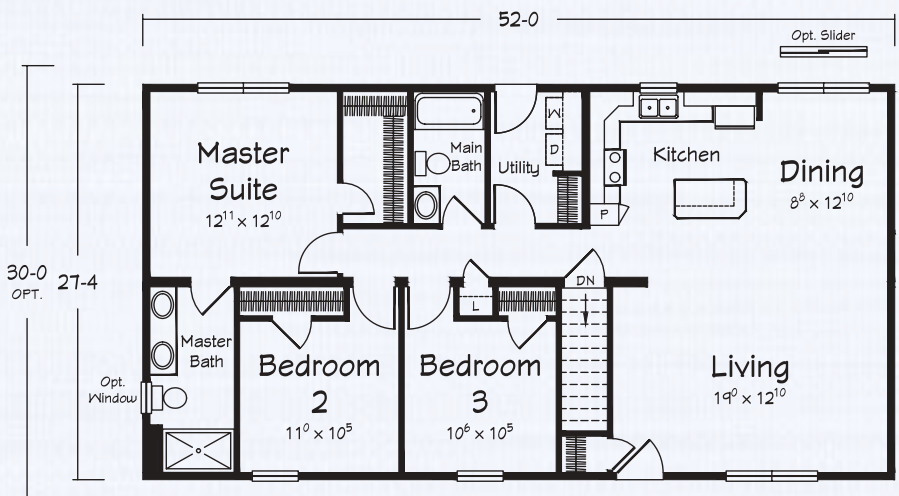
RANCH

1422-1560 square feet

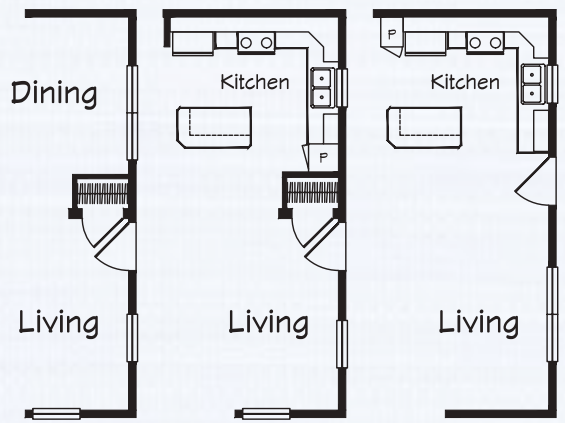
3 Bedrooms • 2 Baths



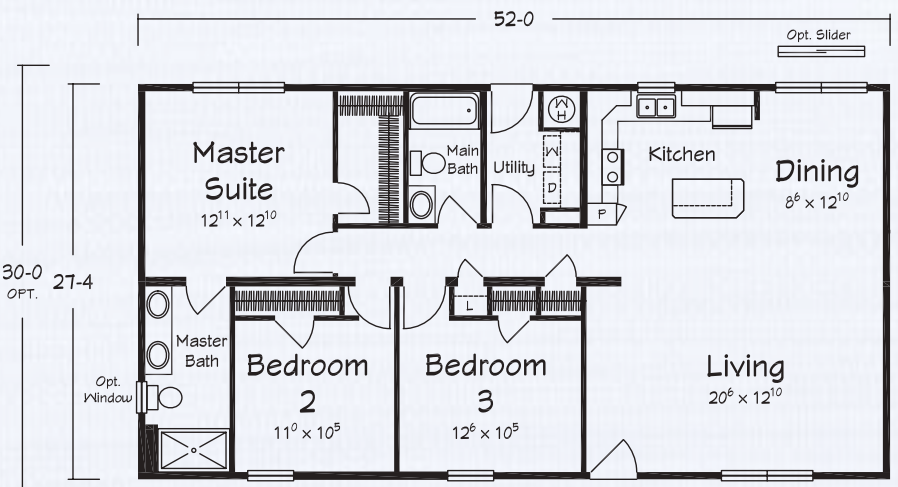
Shown with site built porch



Basement Plan



Optional Gable Optional Gable Optional Gable



Crawlspace Plan



Optional Gable Entry shown with site built porch

Artist's renderings depict homes as they may be built on a typical site. Renderings may include optional or site installed features. Refer to Ritz-Craft's standard "Homestead Specifications" and be sure to thoroughly discuss all aspects of your building project with your selected homebuilder.





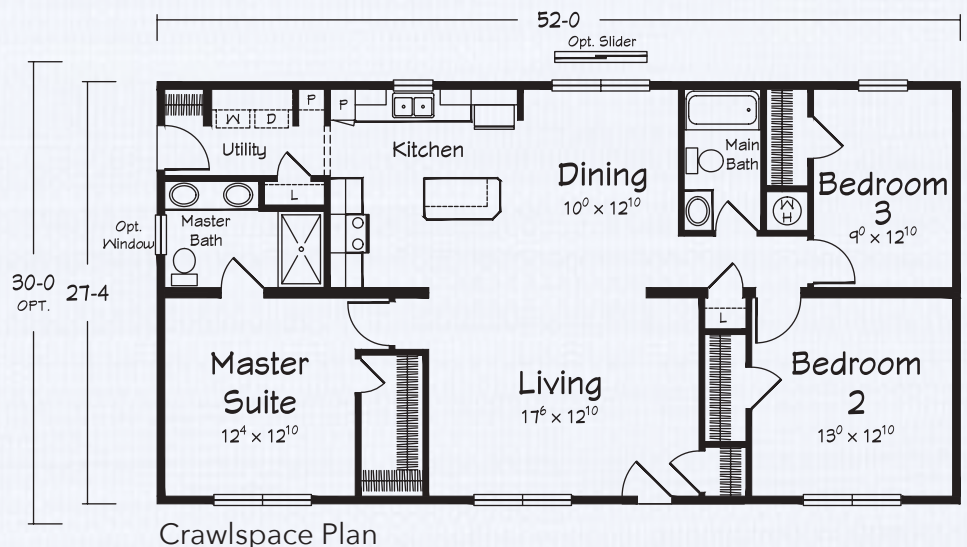
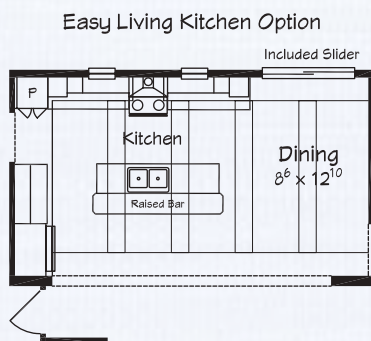
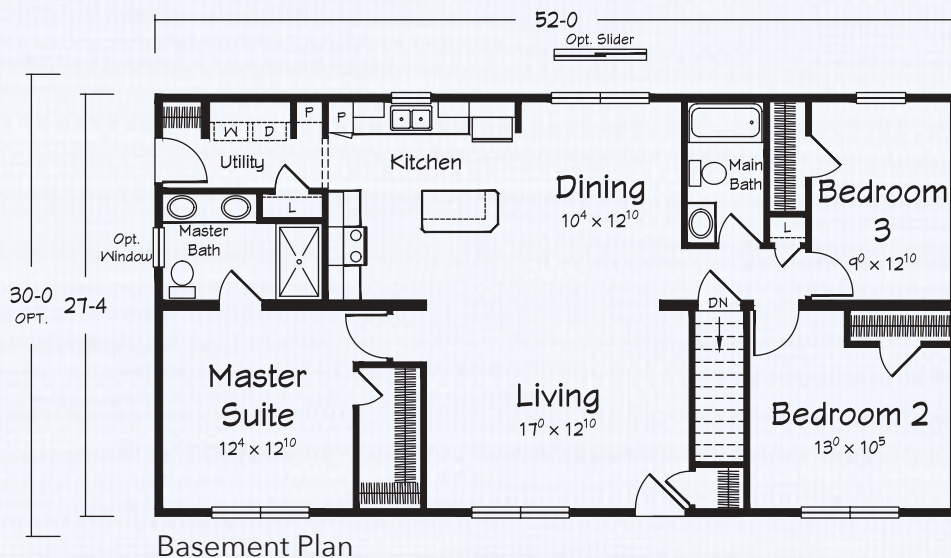
**A HOMESTEAD
Ranch
Plan**

EVERLY RANCH

1422-1560 square feet
3 Bedrooms • 2 Baths



Shown with site built porch





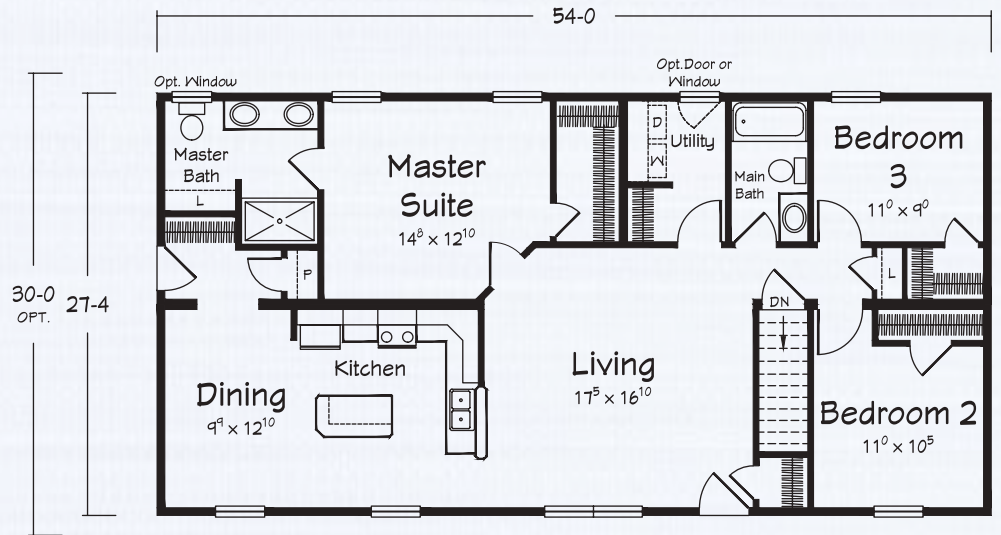
**A HOMESTEAD
Ranch
Plan**



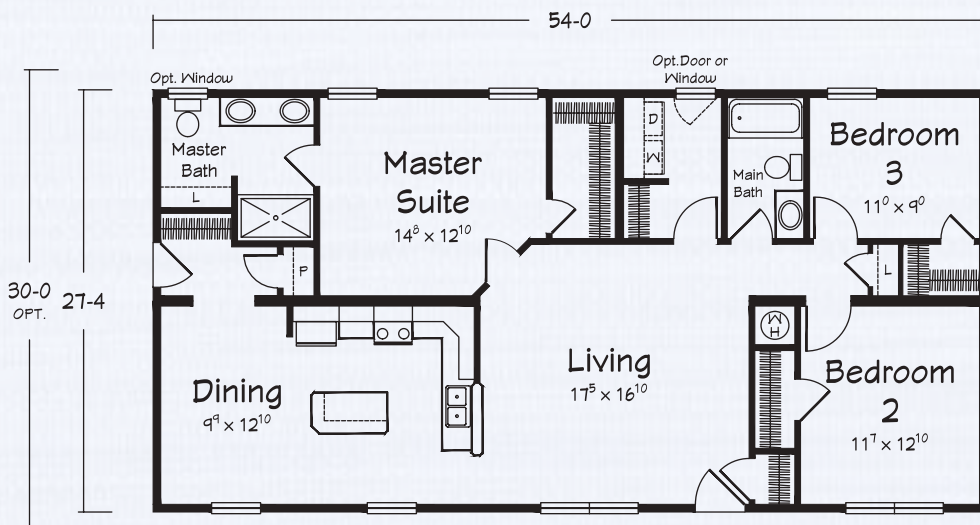
Shown with site built porch

ELLICOTT RANCH

1475-1620 square feet
3 Bedrooms • 2 Baths



Basement Plan



Crawlspace Plan



Artist's renderings depict homes as they may be built on a typical site. Renderings may include optional or site installed features. Refer to Ritz-Craft's standard "Homestead Specifications" and be sure to thoroughly discuss all aspects of your building project with your selected homebuilder.





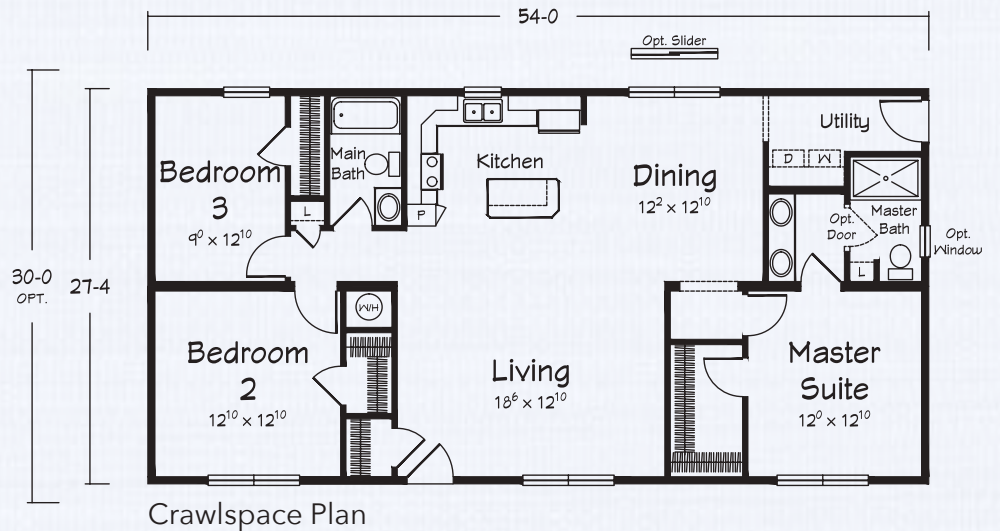
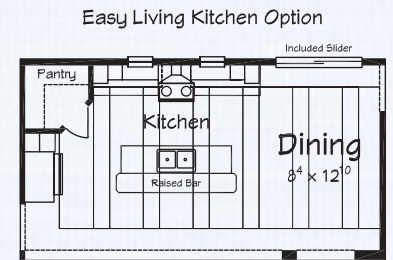
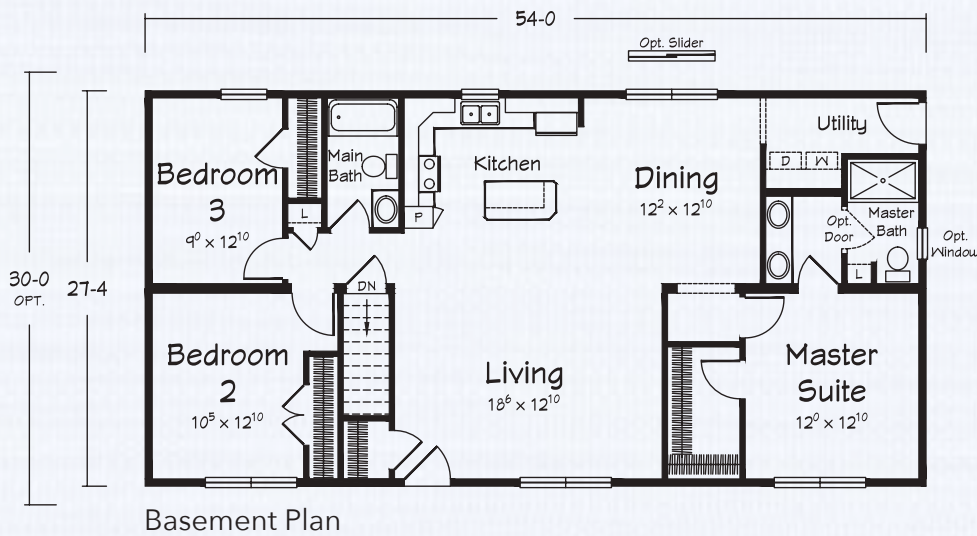
**A HOMESTEAD
Ranch
Plan**

SHELBYVILLE RANCH

1476-1620 square feet
3 Bedrooms • 2 Baths



Shown with optional saddle roof and porch





A HOMESTEAD
Ranch
Plan

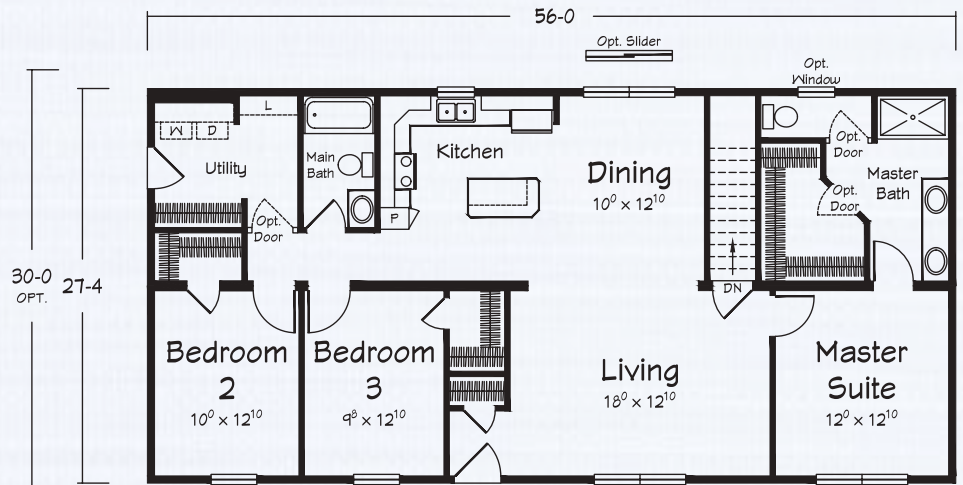
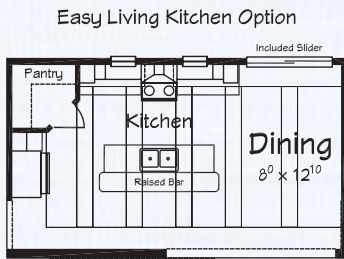


Shown with site built porch

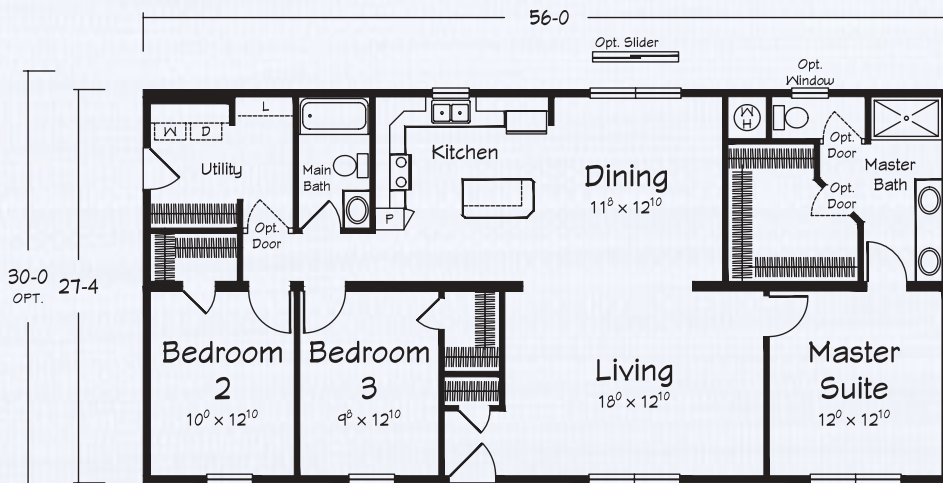
ELMIRA

RANCH

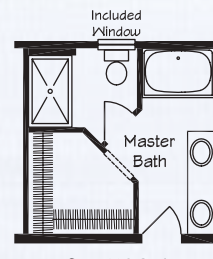
1476-1620 square feet
3 Bedrooms • 2 Baths



Basement Plan



Crawlspace Plan



Opt. HSB-1

Artist's renderings depict homes as they may be built on a typical site. Renderings may include optional or site installed features. Refer to Ritz-Craft's standard "Homestead Specifications" and be sure to thoroughly discuss all aspects of your building project with your selected homebuilder.





**A HOMESTEAD
Ranch
Plan**

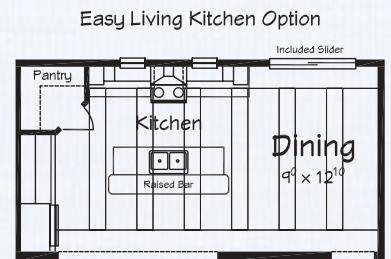
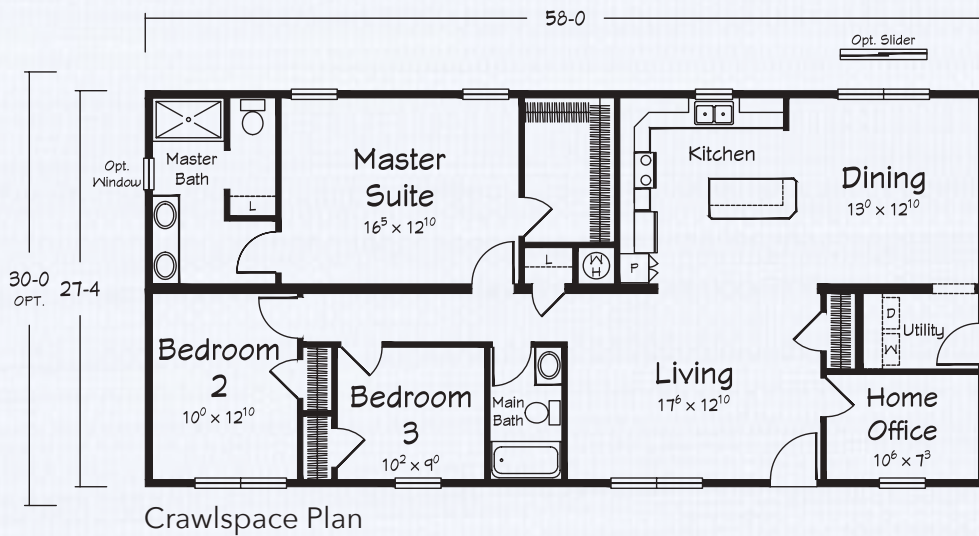
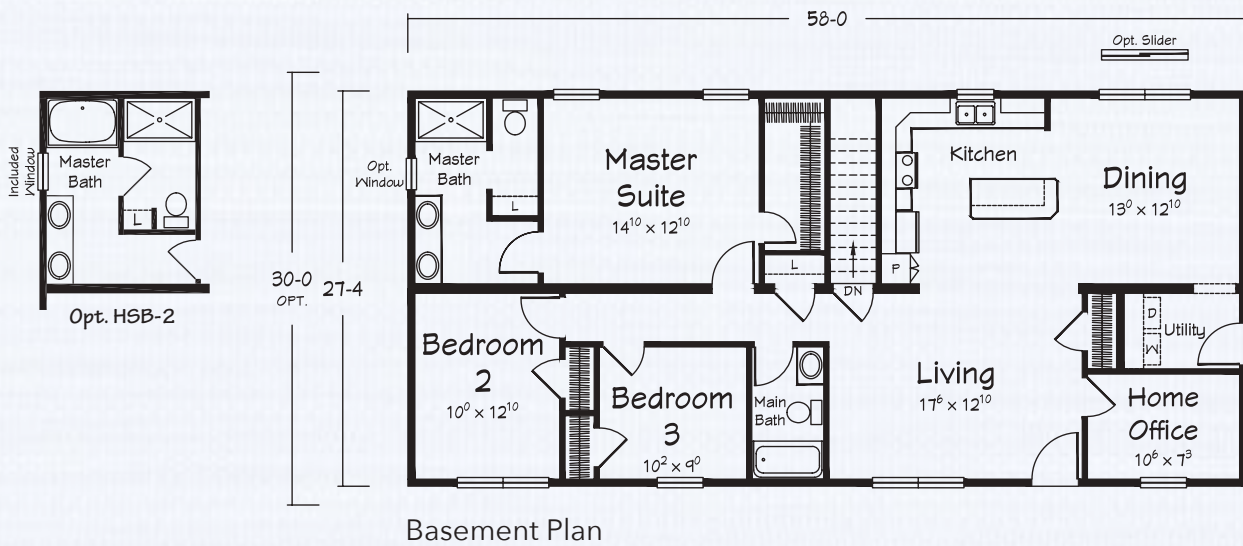
ELLENBORO RANCH

1585-1740 square feet

3 Bedrooms • 2 Baths • Home Office



Shown with site built porch





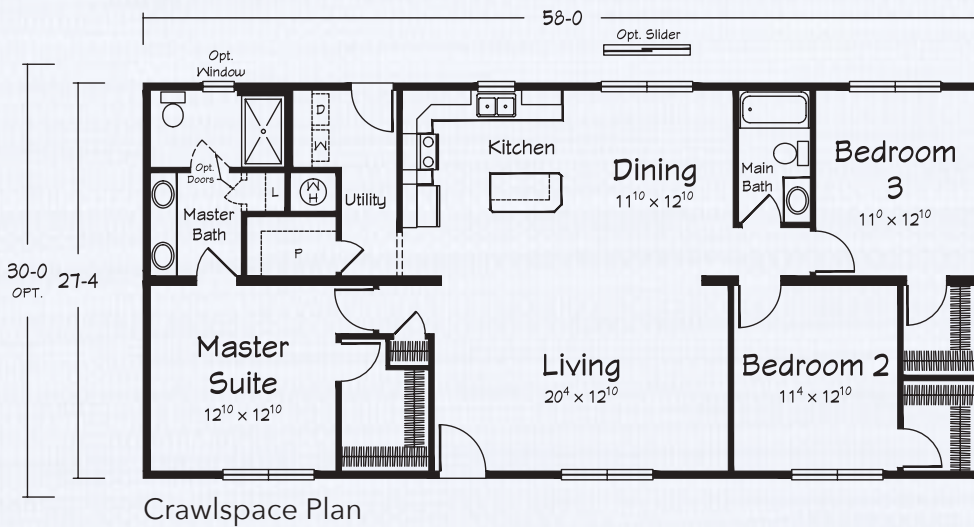
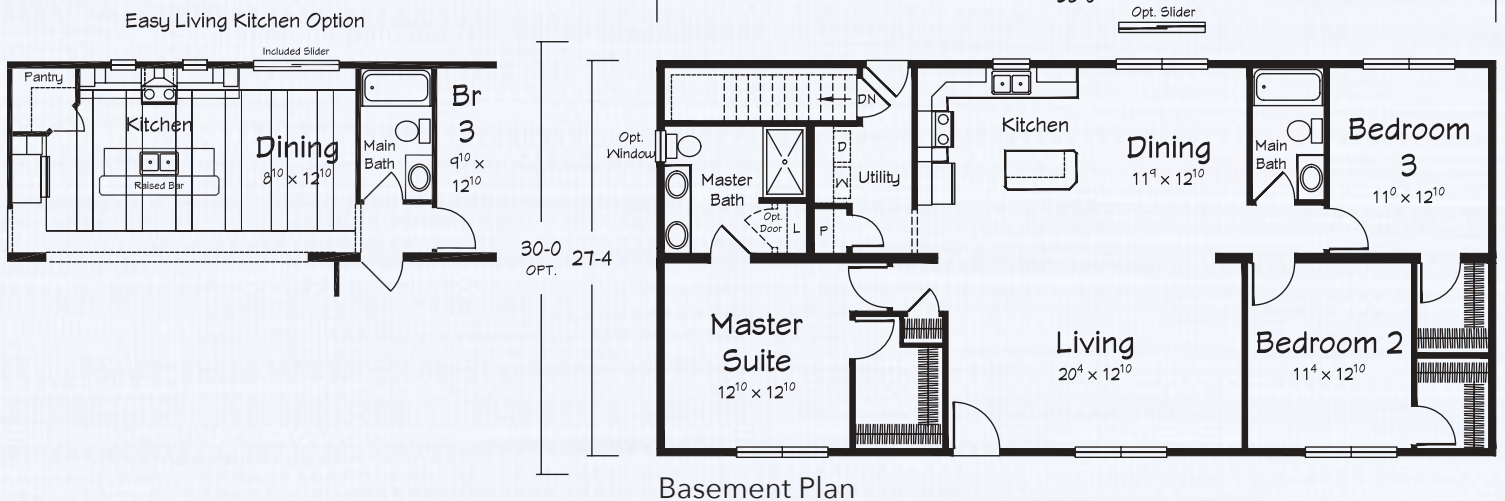
**A HOMESTEAD
Ranch
Plan**



Shown with site built porch

EASTON RANCH

1585-1740 square feet
3 Bedrooms • 2 Baths



Artist's renderings depict homes as they may be built on a typical site. Renderings may include optional or site installed features. Refer to Ritz-Craft's standard "Homestead Specifications" and be sure to thoroughly discuss all aspects of your building project with your selected homebuilder.





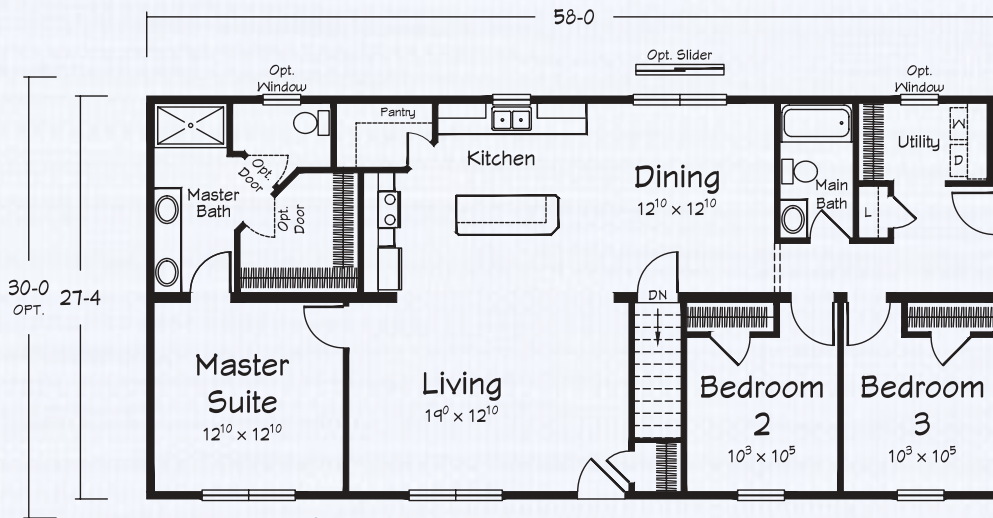
**A HOMESTEAD
Ranch
Plan**

EASY STREET RANCH

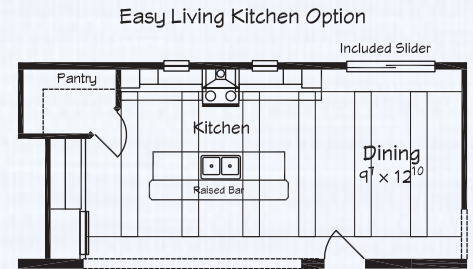
1585-1740 square feet
3 Bedrooms • 2 Baths



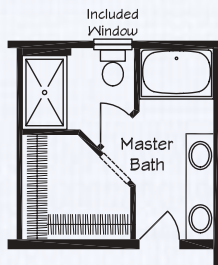
Shown with site built porch



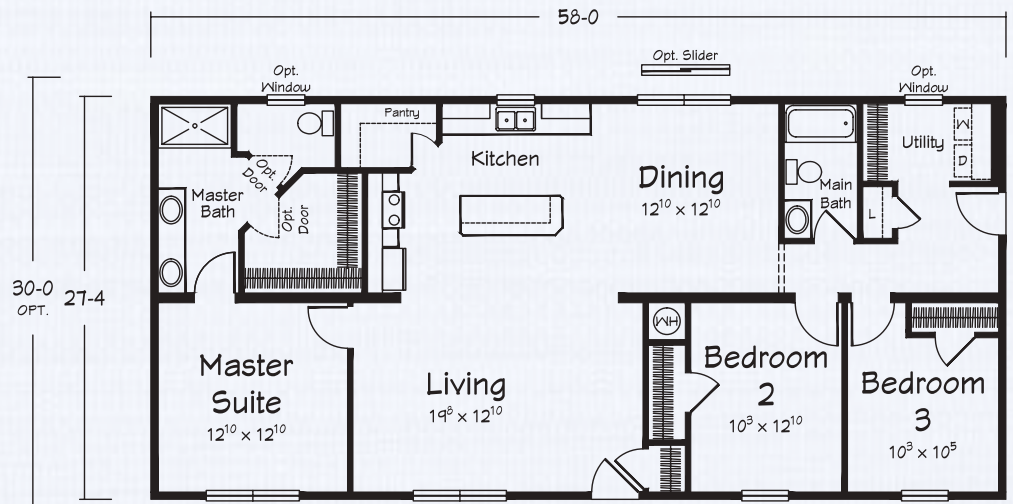
Basement Plan



Easy Living Kitchen Option



Opt. HSB-1



Crawspace Plan



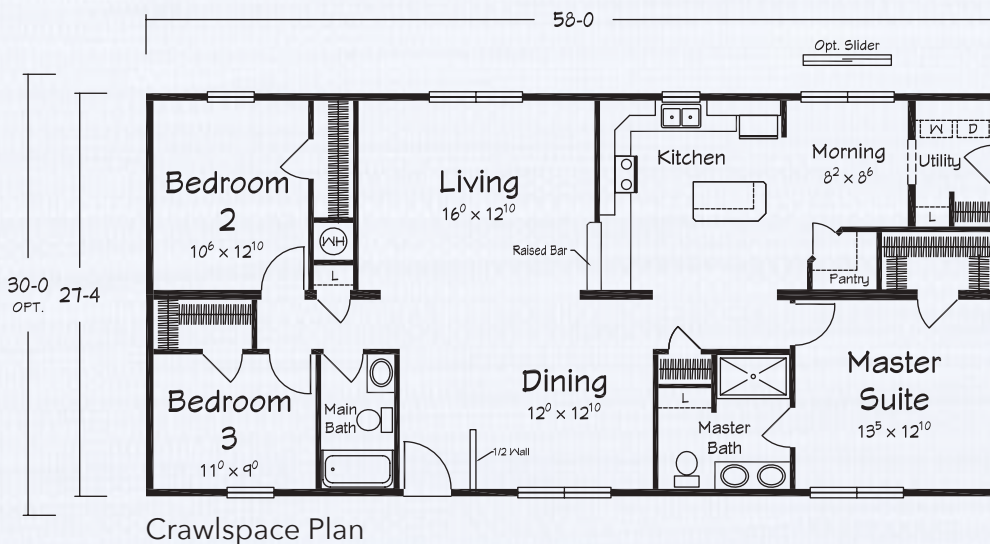
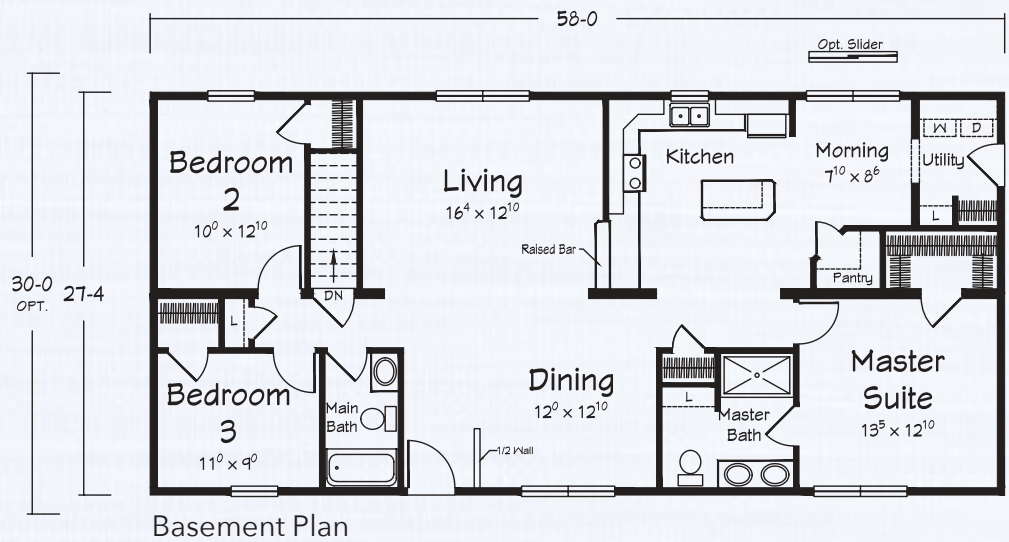
A HOMESTEAD
Ranch
Plan



Shown with site built porch

ELMWOOD RANCH

1585-1740 square feet
3 Bedrooms • 2 Baths



Artist's renderings depict homes as they may be built on a typical site. Renderings may include optional or site installed features. Refer to Ritz-Craft's standard "Homestead Specifications" and be sure to thoroughly discuss all aspects of your building project with your selected homebuilder.





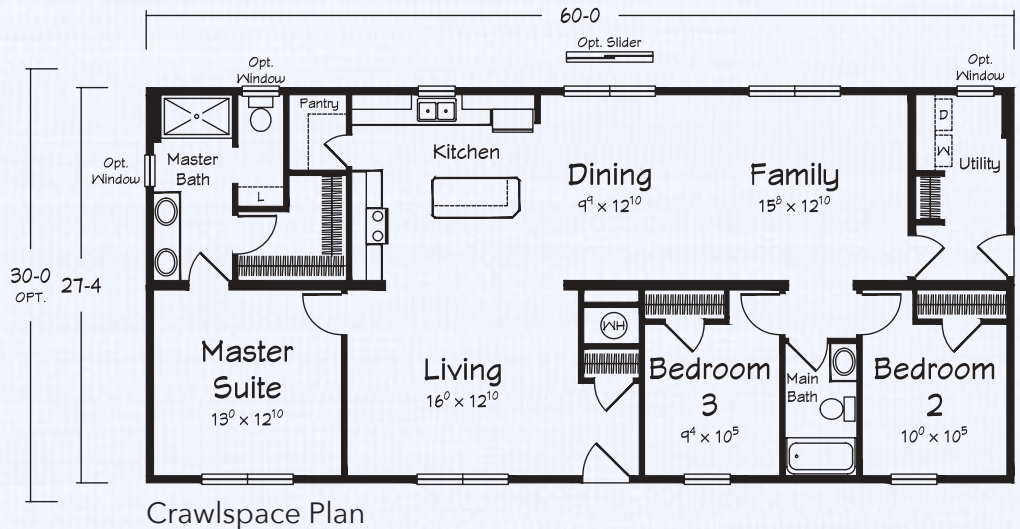
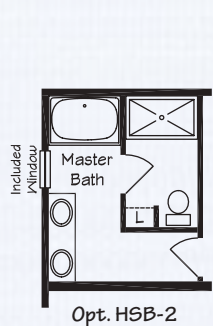
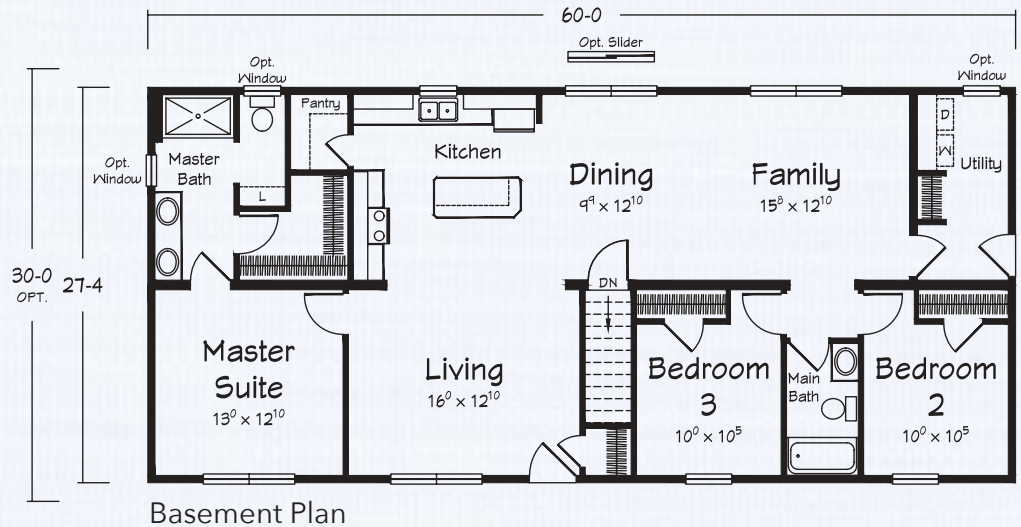
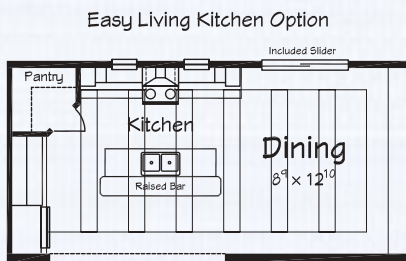
**A HOMESTEAD
Ranch
Plan**

ERWIN RANCH

1640-1800 square feet
3 Bedrooms • 2 Baths



Shown with site built porch





A HOMESTEAD
Ranch
Plan



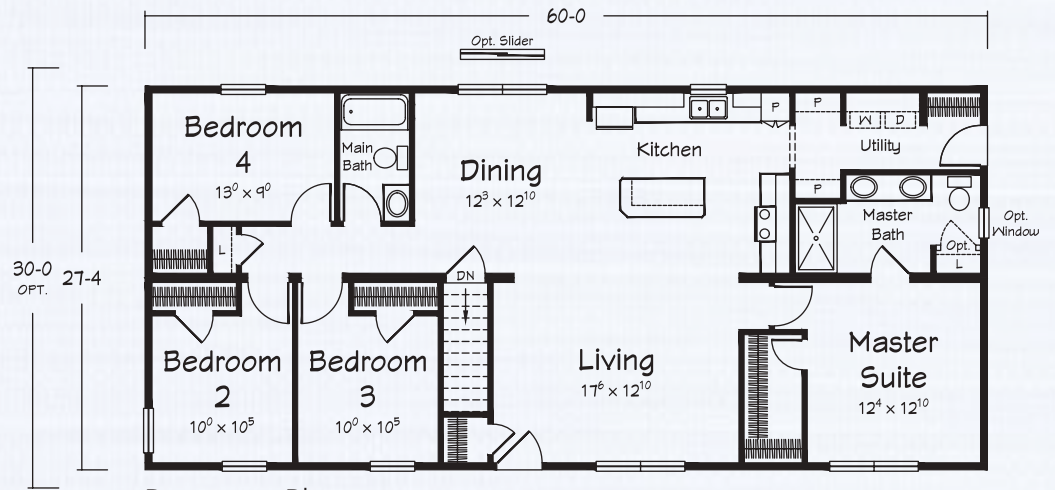
Shown with site built porch

ESSEX

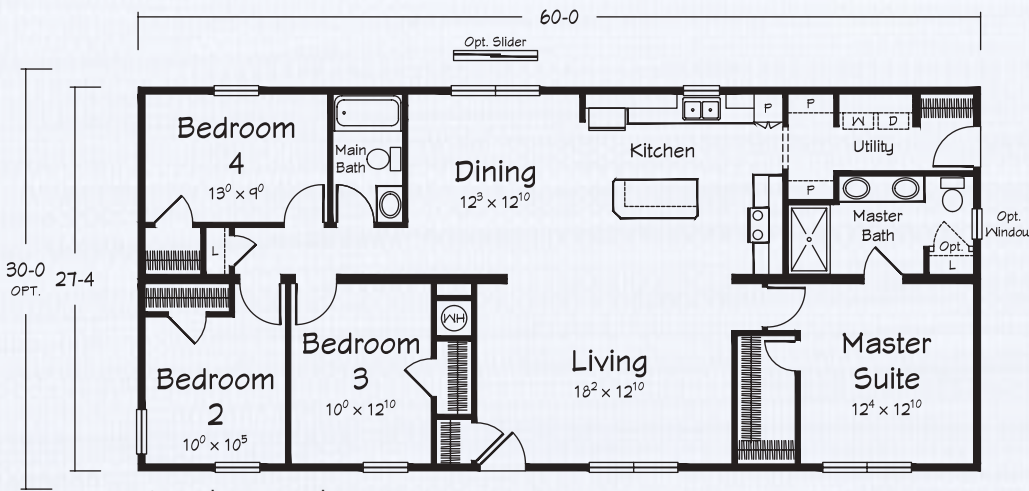
RANCH

1640-1800 square feet

4 Bedrooms • 2 Baths

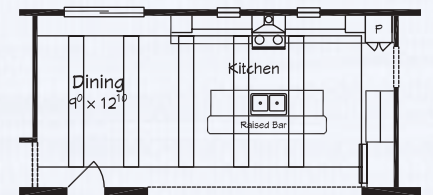


Basement Plan



Crawspace Plan

Easy Living Kitchen Option



Artist's renderings depict homes as they may be built on a typical site. Renderings may include optional or site installed features. Refer to Ritz-Craft's standard "Homestead Specifications" and be sure to thoroughly discuss all aspects of your building project with your selected homebuilder.





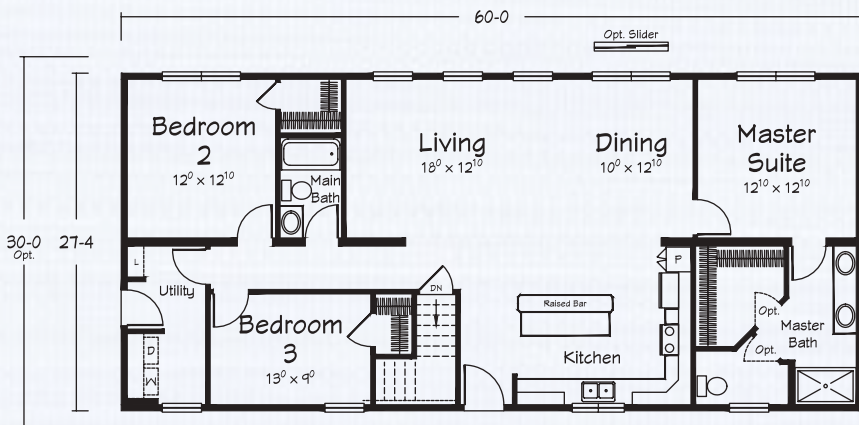
**A HOMESTEAD
Ranch
Plan**

ELBERTA RANCH

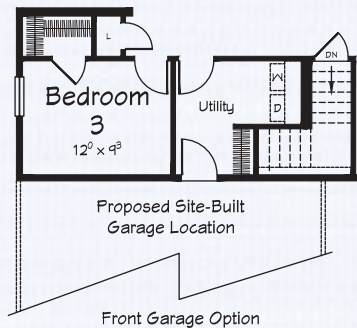
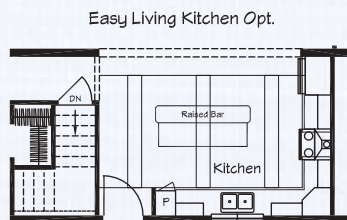
1640-1800 square feet
3 Bedrooms • 2 Baths



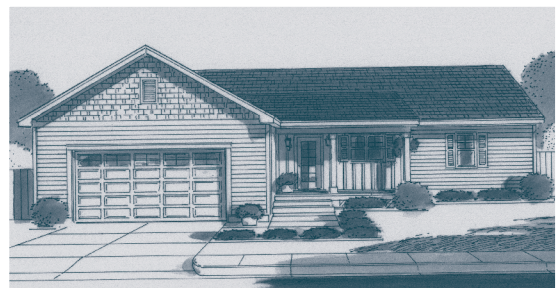
Shown with optional saddle roof and porch



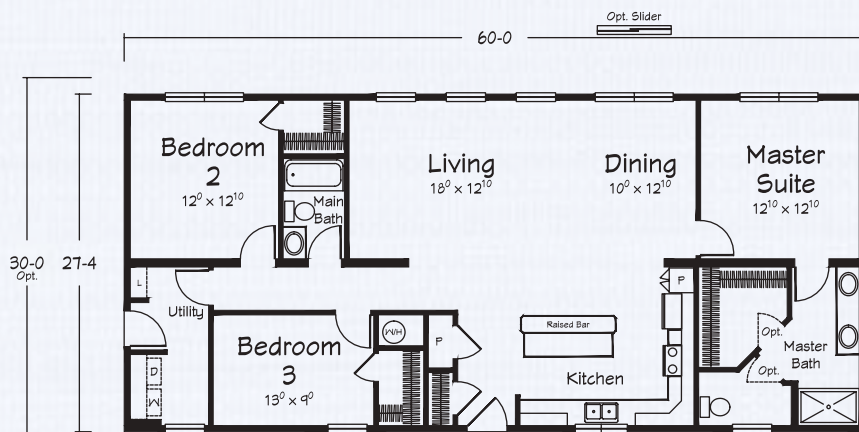
Basement Plan



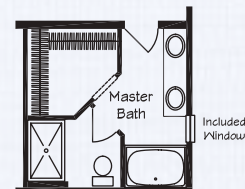
Front Garage Option



Opt. Front Garage Plan



Crawlspace Plan



Opt. H5B-1



A HOMESTEAD
Ranch
Plan



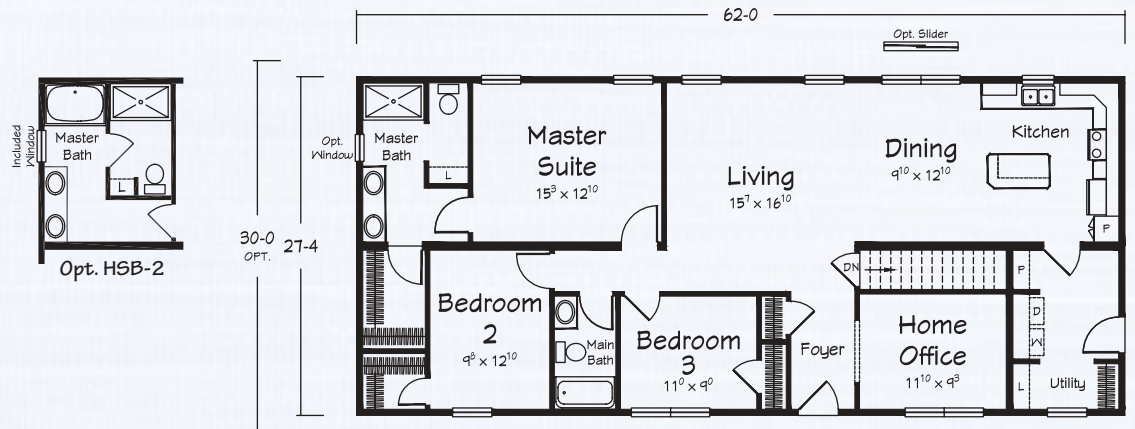
Shown with site built porch

EASTBROOK

RANCH

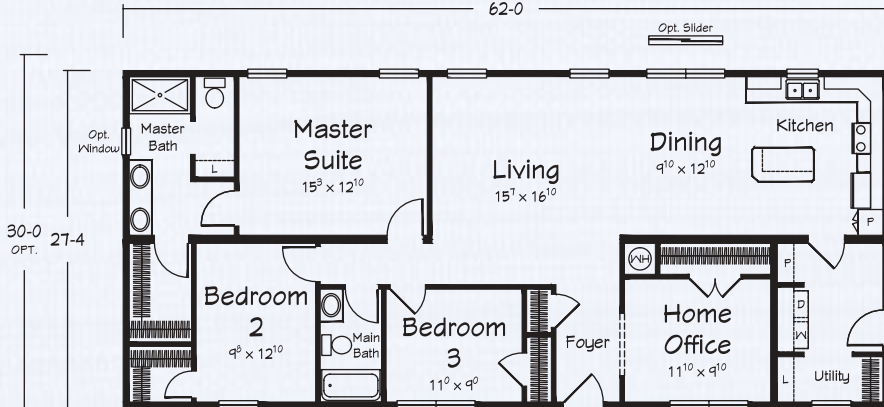
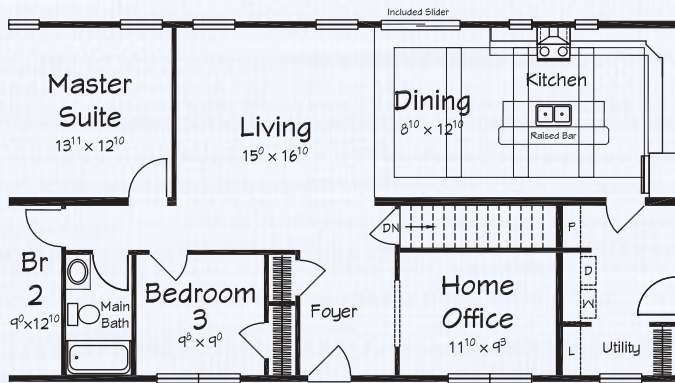
1695-1860 square feet

3 Bedrooms • 2 Baths • Home Office



Basement Plan

Easy Living Kitchen Option



Crawspace Plan

Artist's renderings depict homes as they may be built on a typical site. Renderings may include optional or site installed features. Refer to Ritz-Craft's standard "Homestead Specifications" and be sure to thoroughly discuss all aspects of your building project with your selected homebuilder.





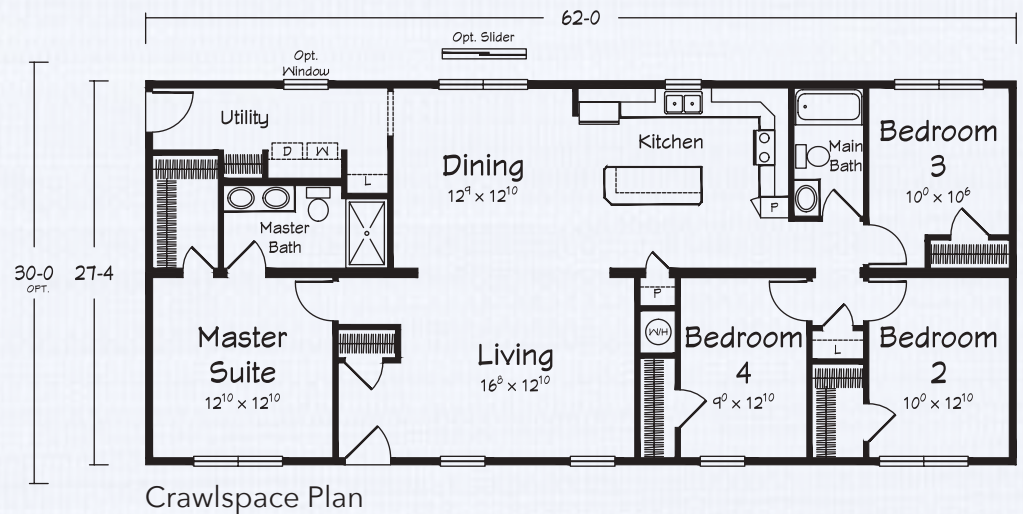
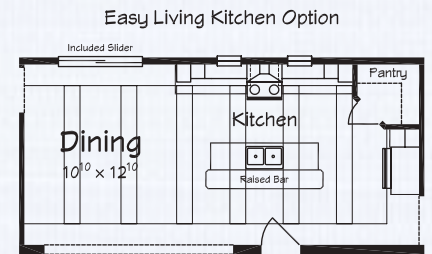
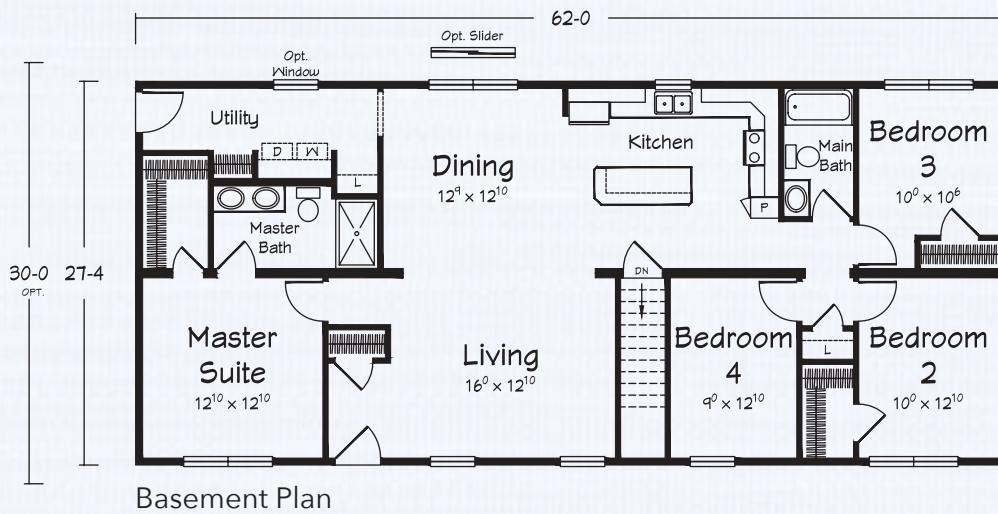
**A HOMESTEAD
Ranch
Plan**

STILLWATER RANCH

1695-1860 square feet
4 Bedrooms • 2 Baths



Shown with optional saddle roof and porch





A HOMESTEAD
Ranch
Plan

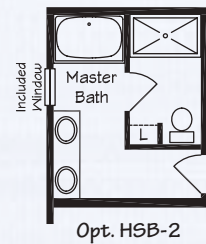
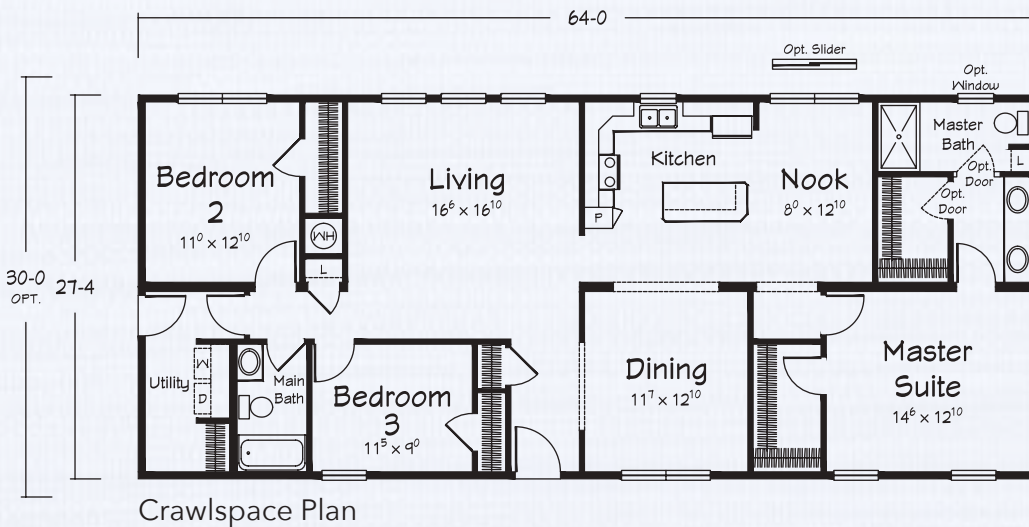
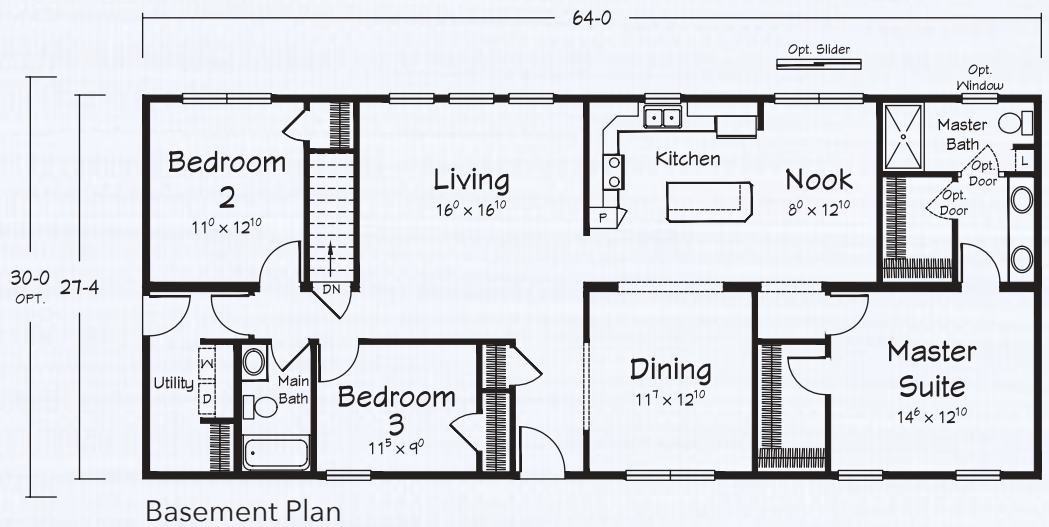


Shown with site built porch

ELKTON

RANCH

1749-1920 square feet
3 Bedrooms • 2 Baths



Artist's renderings depict homes as they may be built on a typical site. Renderings may include optional or site installed features. Refer to Ritz-Craft's standard "Homestead Specifications" and be sure to thoroughly discuss all aspects of your building project with your selected homebuilder.





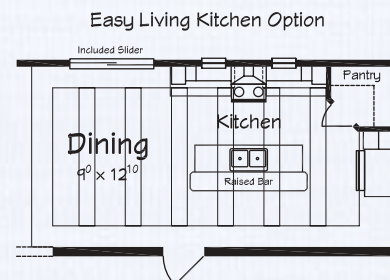
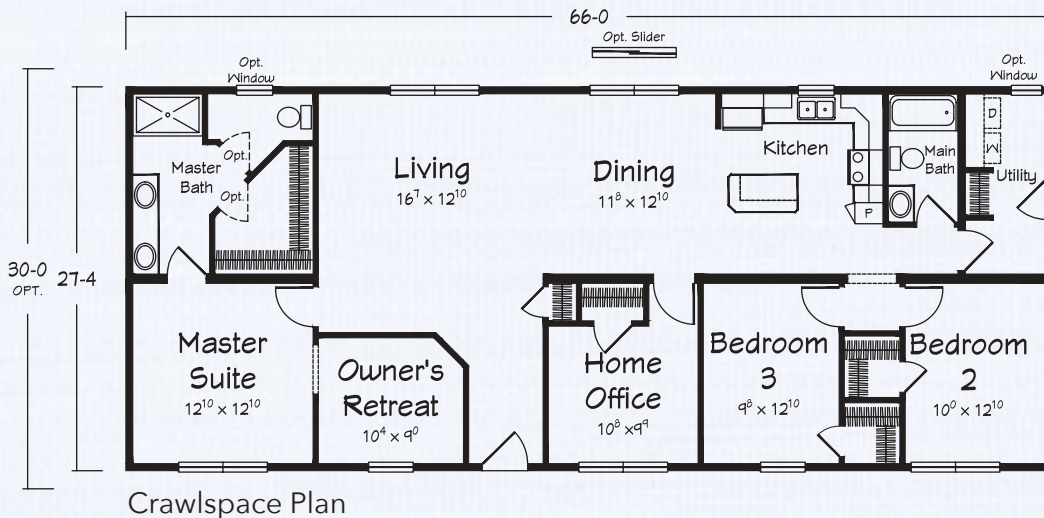
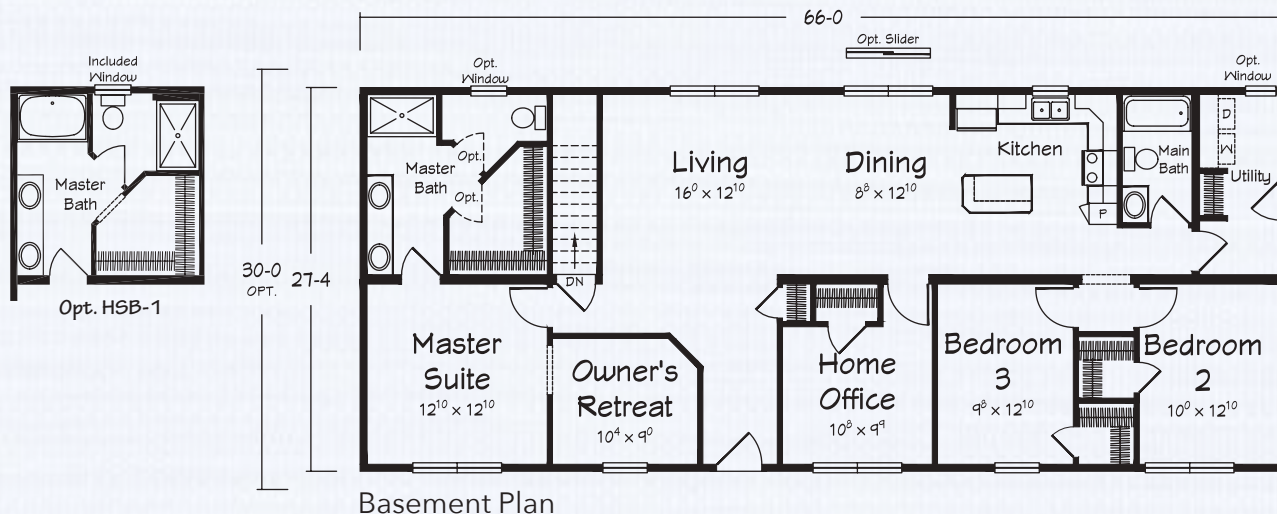
**A HOMESTEAD
Ranch
Plan**

SAXONY RANCH

1804-1980 square feet
3-4 Bedrooms • 2 Baths



Shown with site built porch





Your Master Suite



Opt. walk-up attic storage



Living Room with optional "floating" entertainment center and Craftsman door



Opt. Easy Living Kitchen/Dining Area



Your approved
Ritz-Craft
Homebuilder:



Approved homebuilders are independent business entities and are not agents of Ritz-Craft Corporation.

Due to occasional updating of building codes and Ritz-Craft's continuous product improvement, specifications are subject to change without prior notification.
Be sure to request a copy of Homestead Series specifications from your selected homebuilder.

Floorplans and renderings are ©2017 Ritz-Craft Corporation. 0917